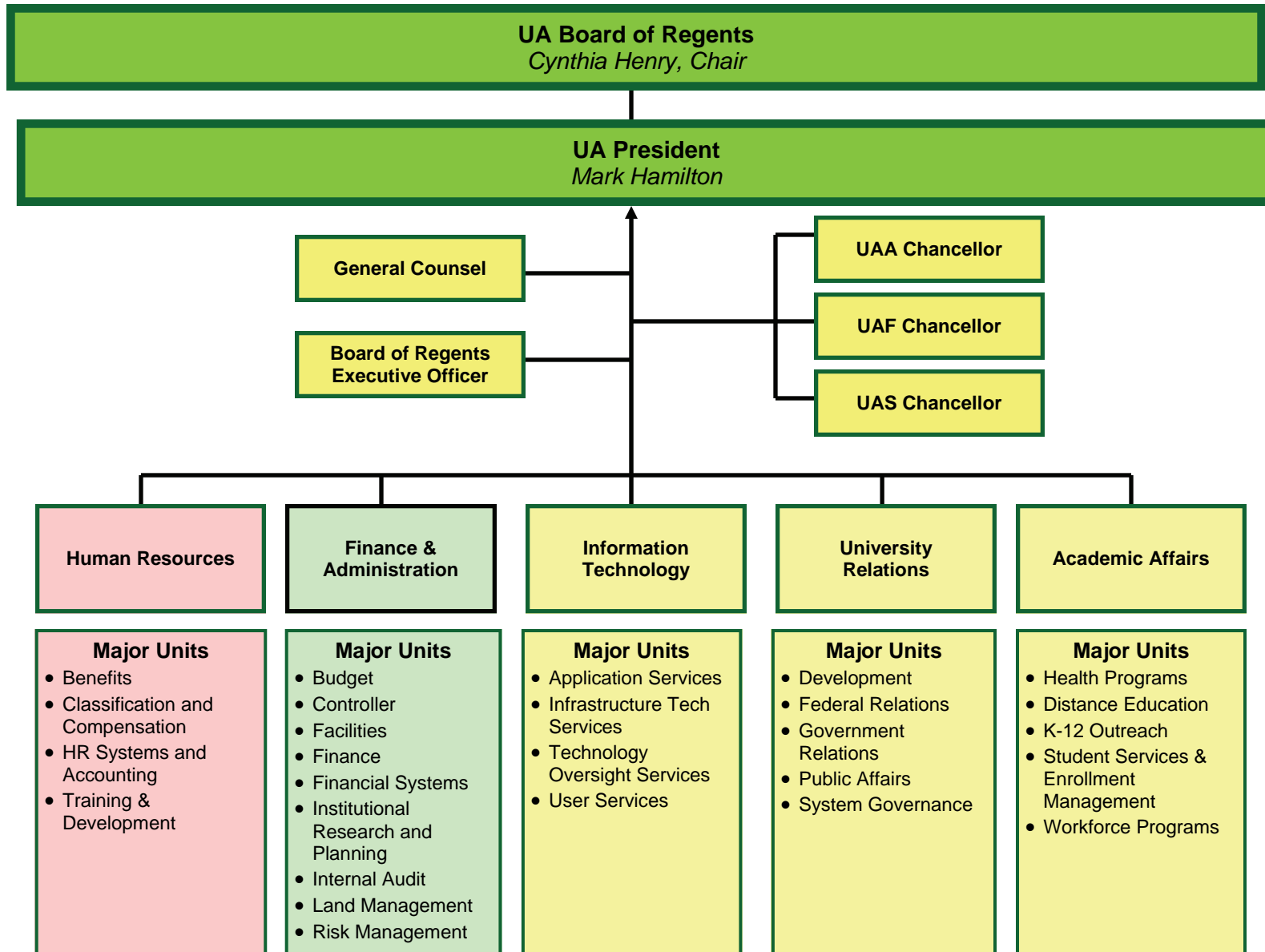
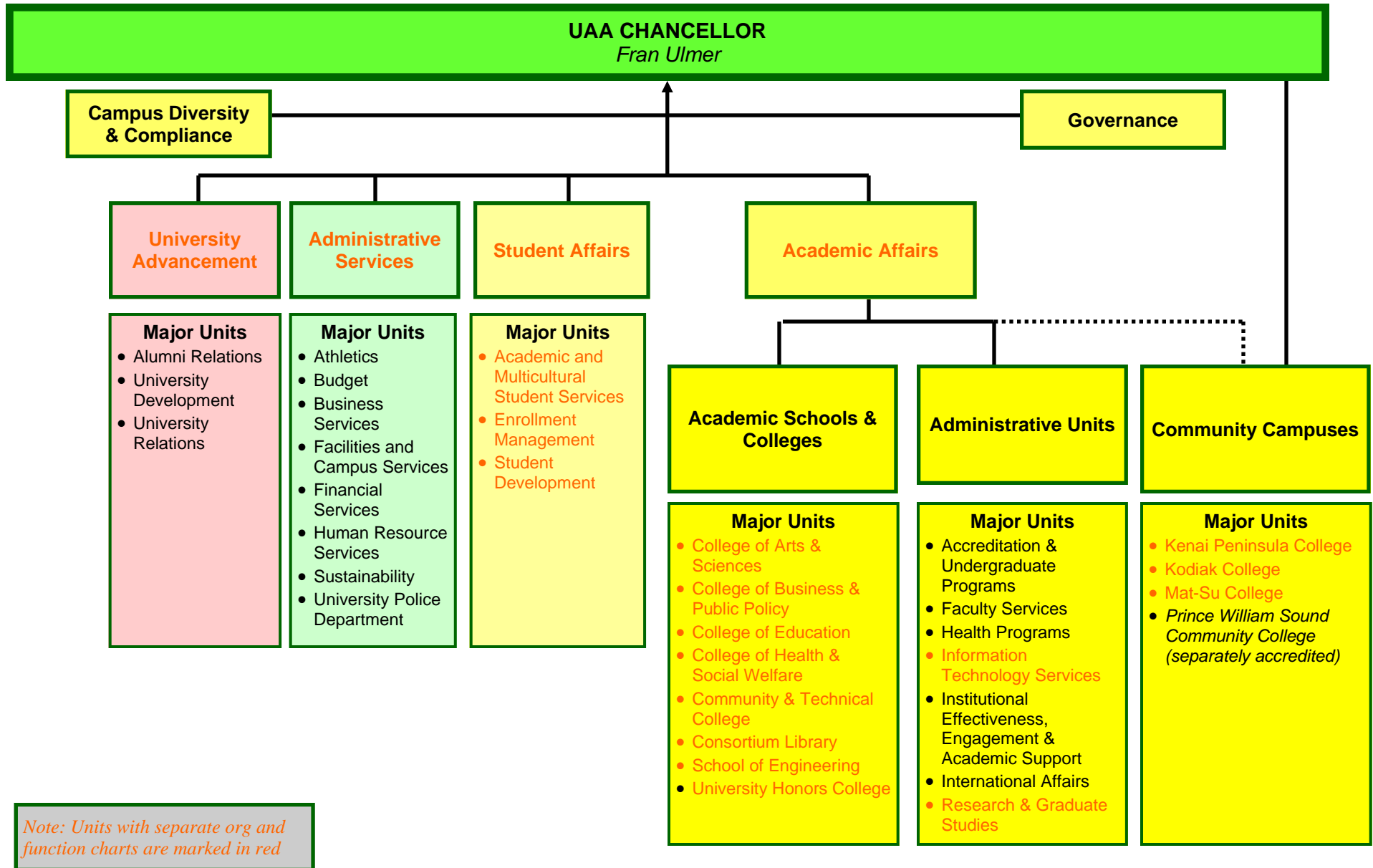


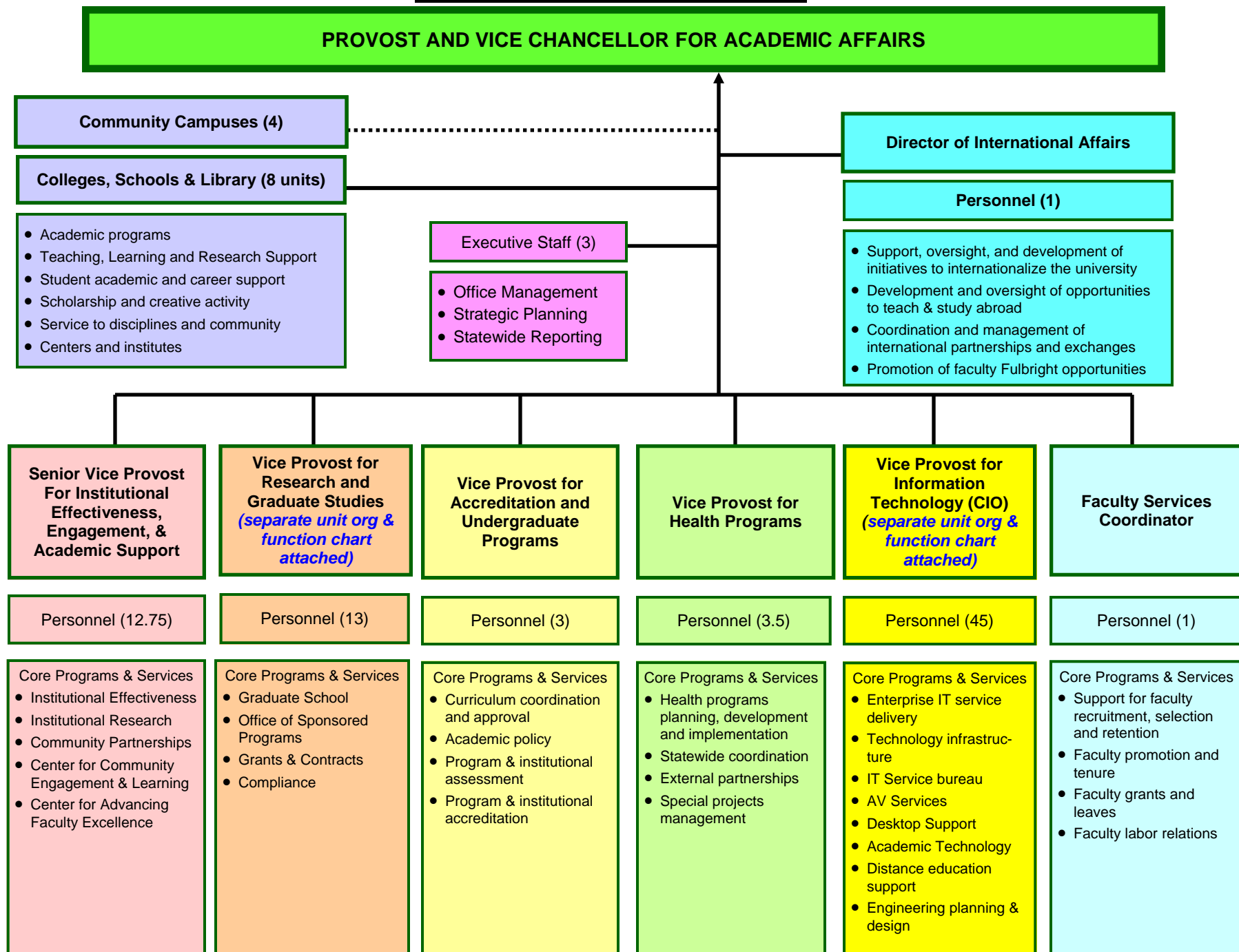
University of Alaska System: Organization Chart



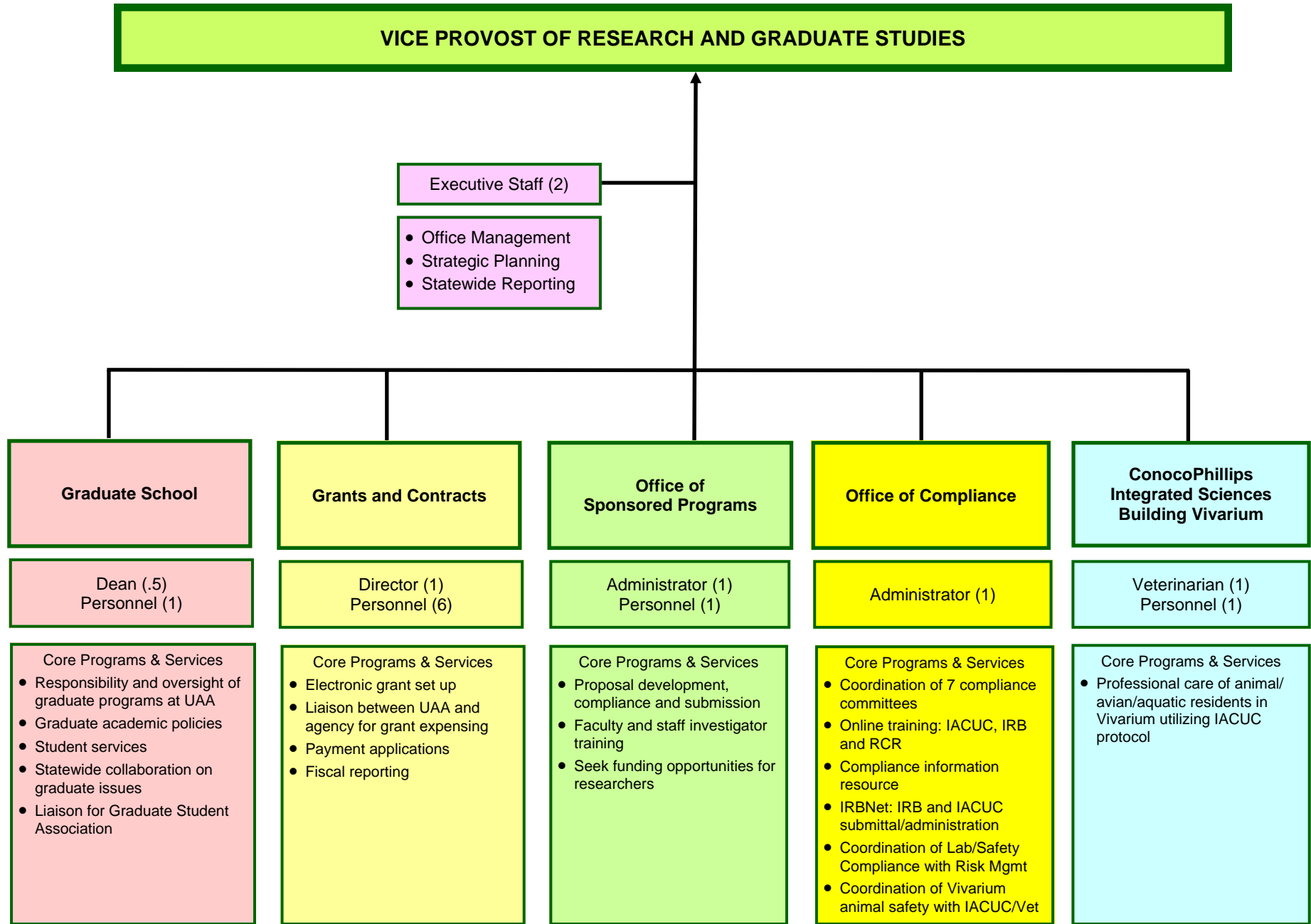
University of Alaska Anchorage Organization Chart



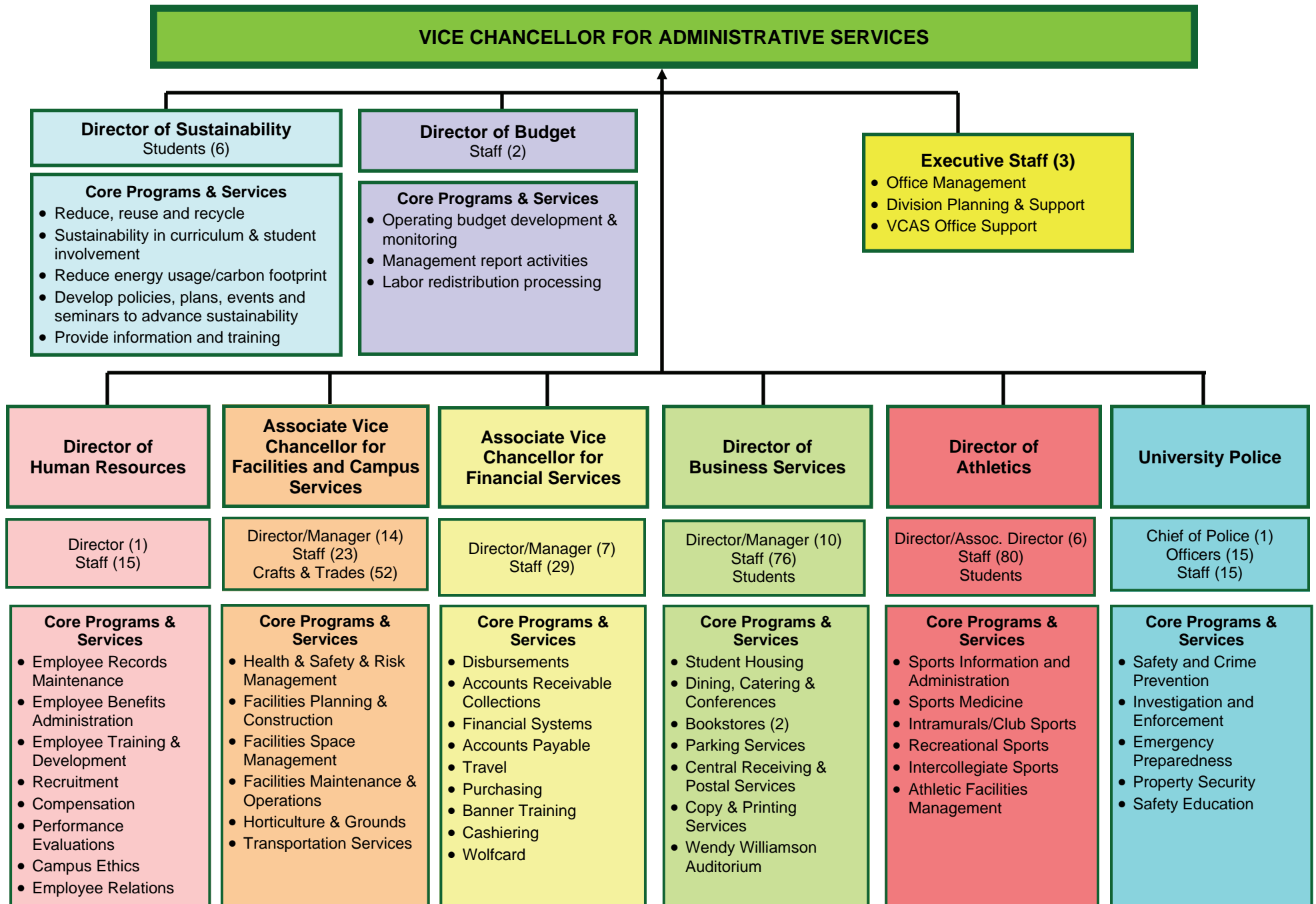
Academic Affairs: Organization Chart



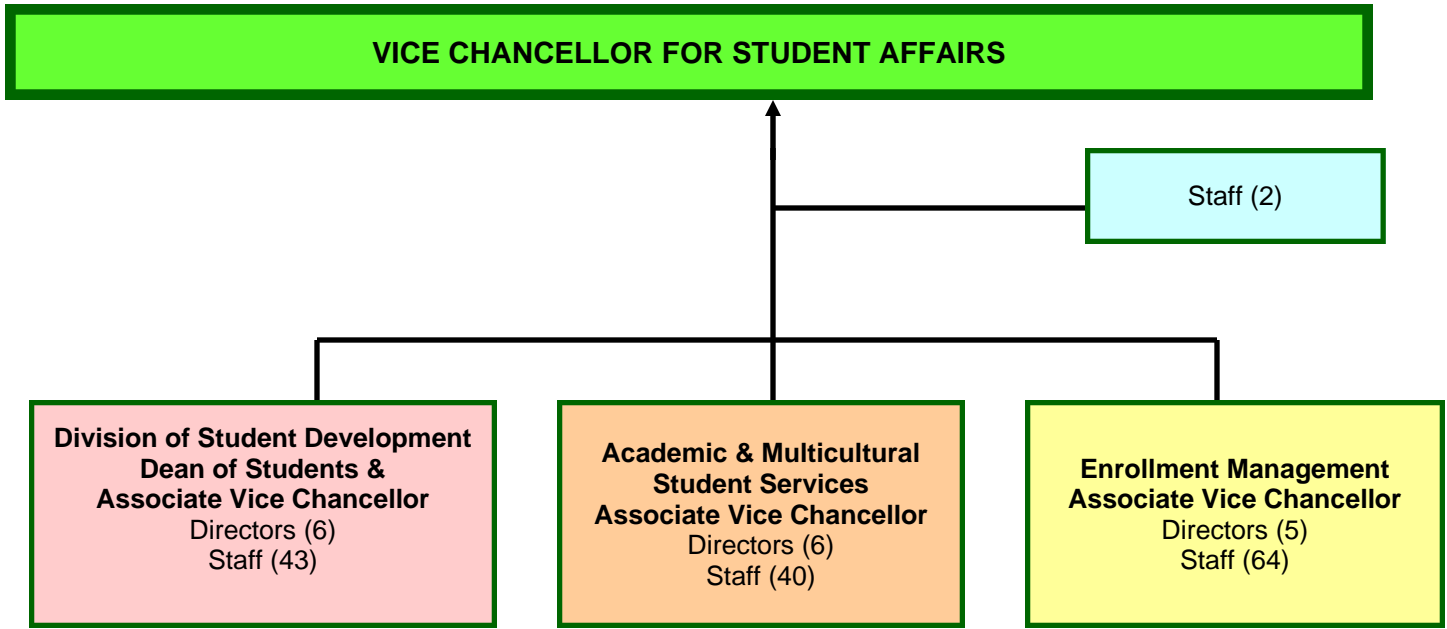
Academic Affairs: Office of Research and Graduate Studies: Organization Chart



Administrative Services: Organization Chart

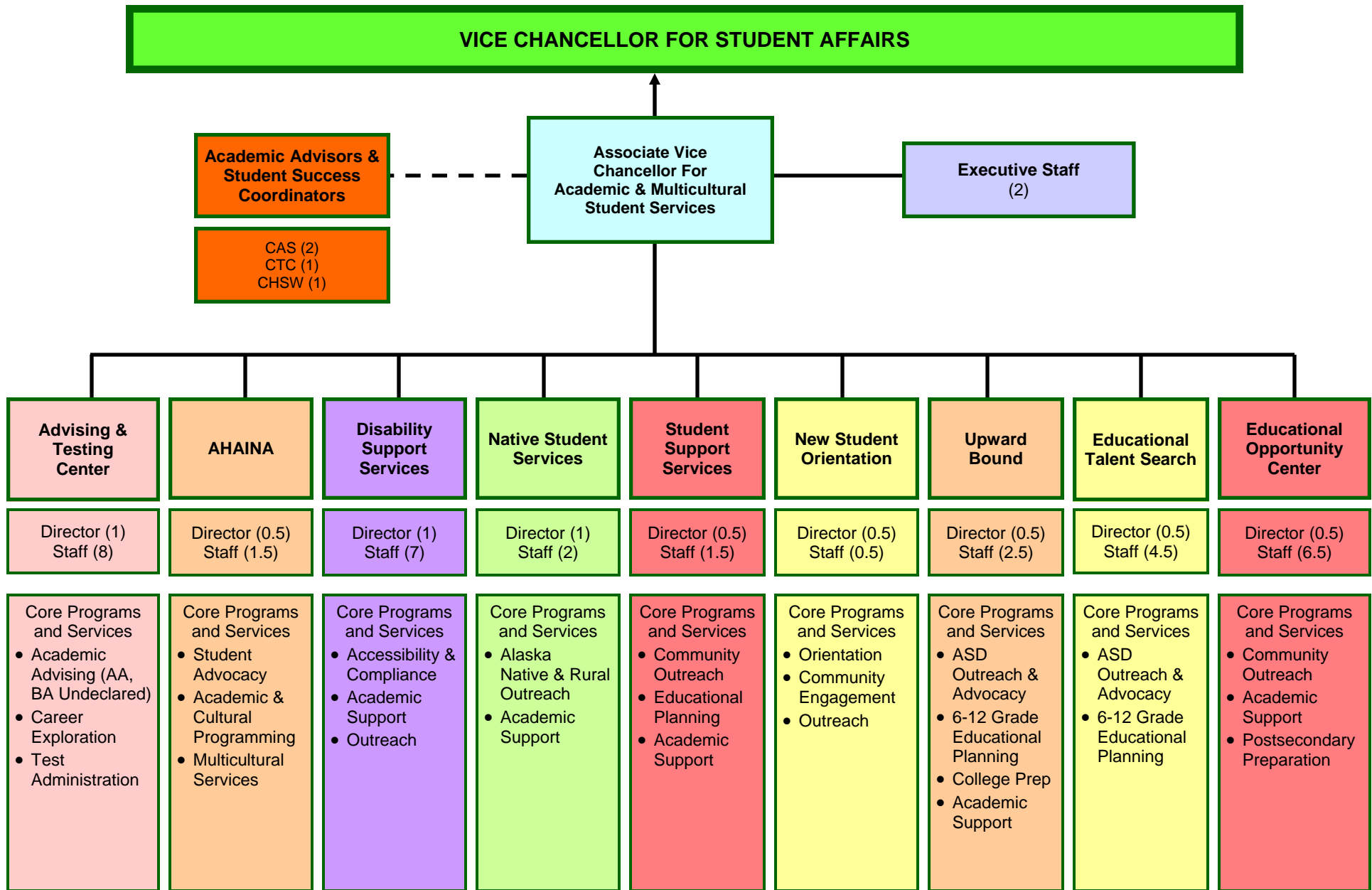


Student Affairs: Organization Chart

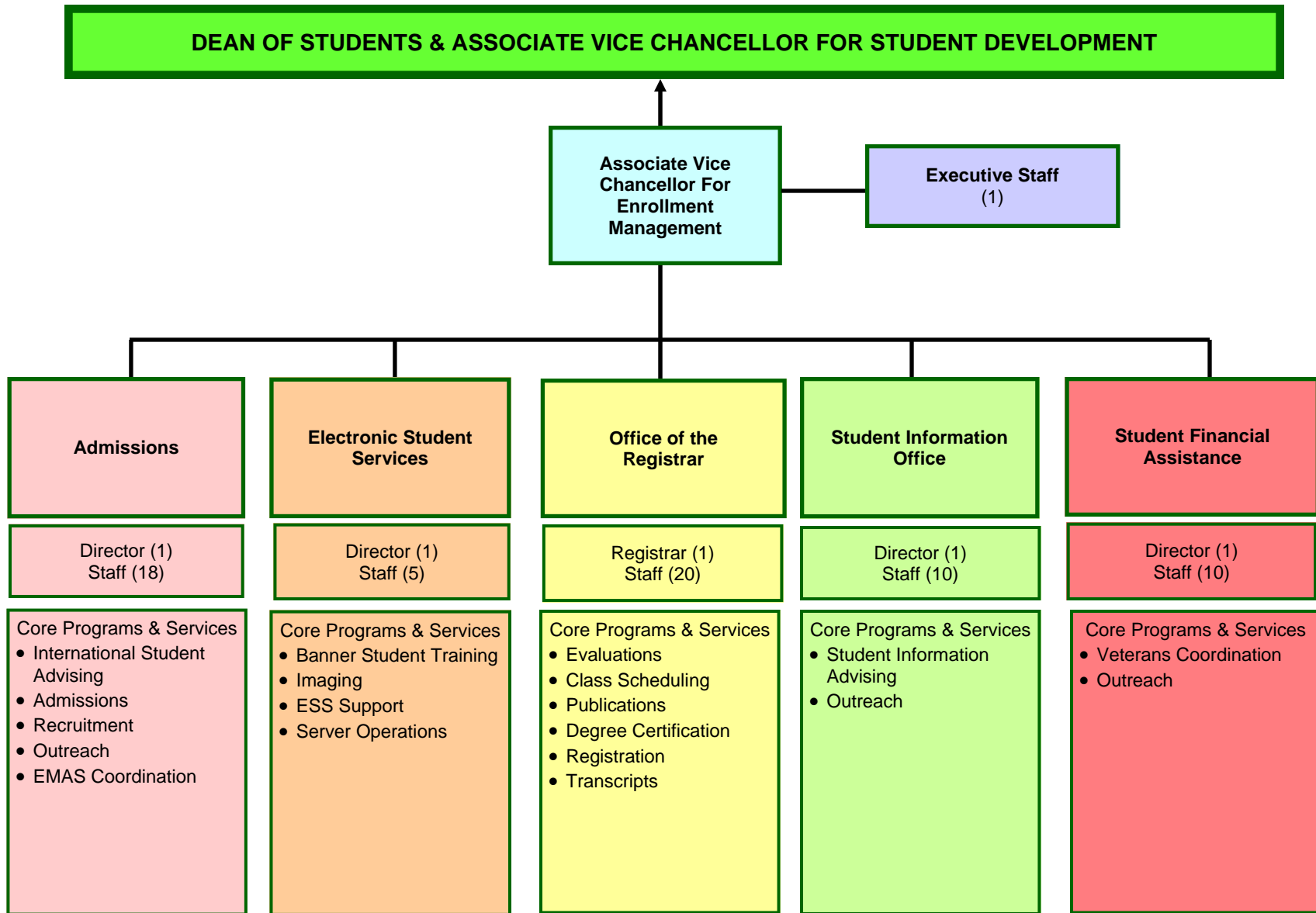


Note: Due to the size and complexity of the organizations under Student Affairs, separate org & function charts are attached for each of the three divisions under the Vice Chancellor.

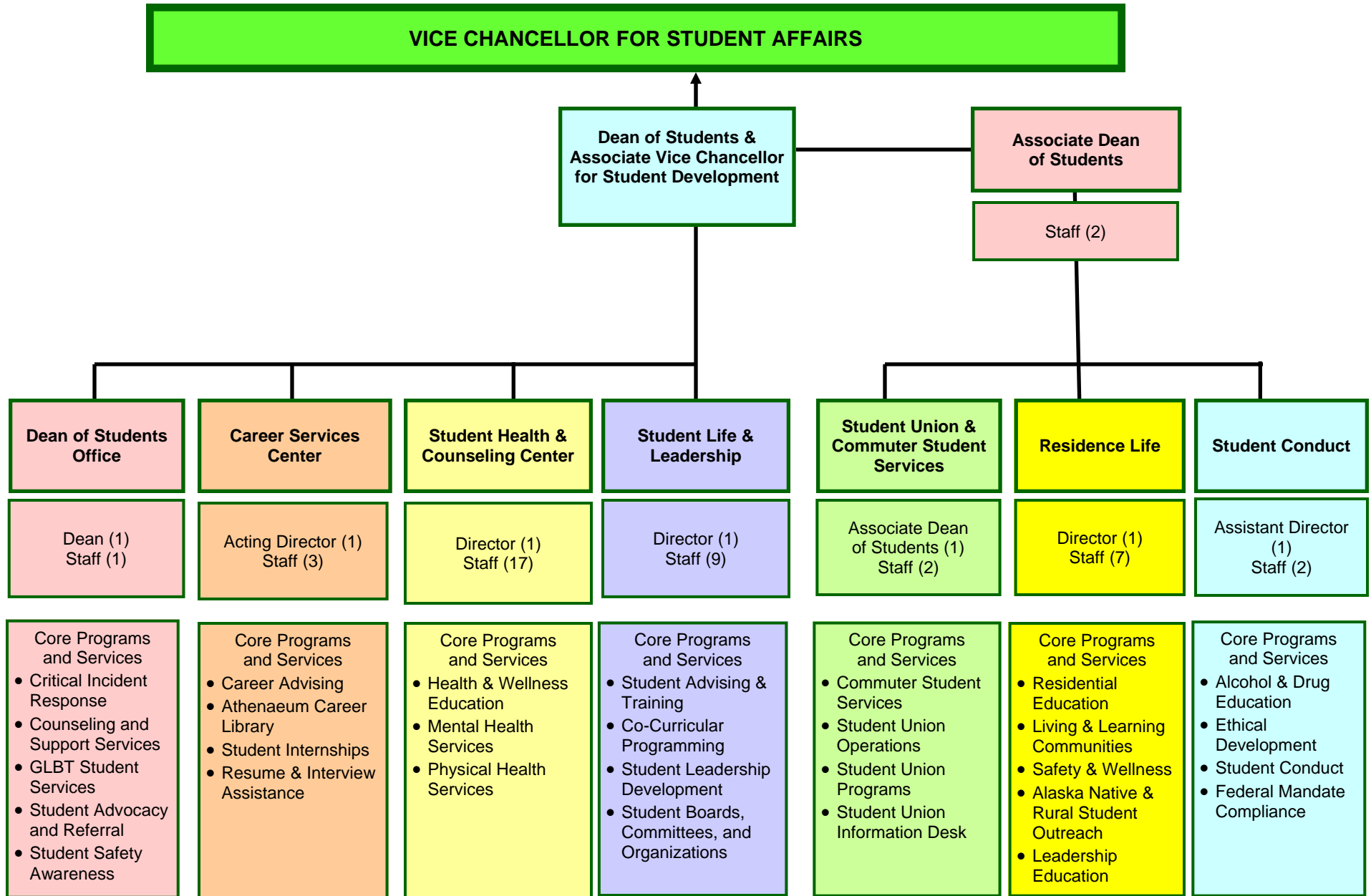
Student Affairs: Division of Academic and Multicultural Student Services: Organization Chart



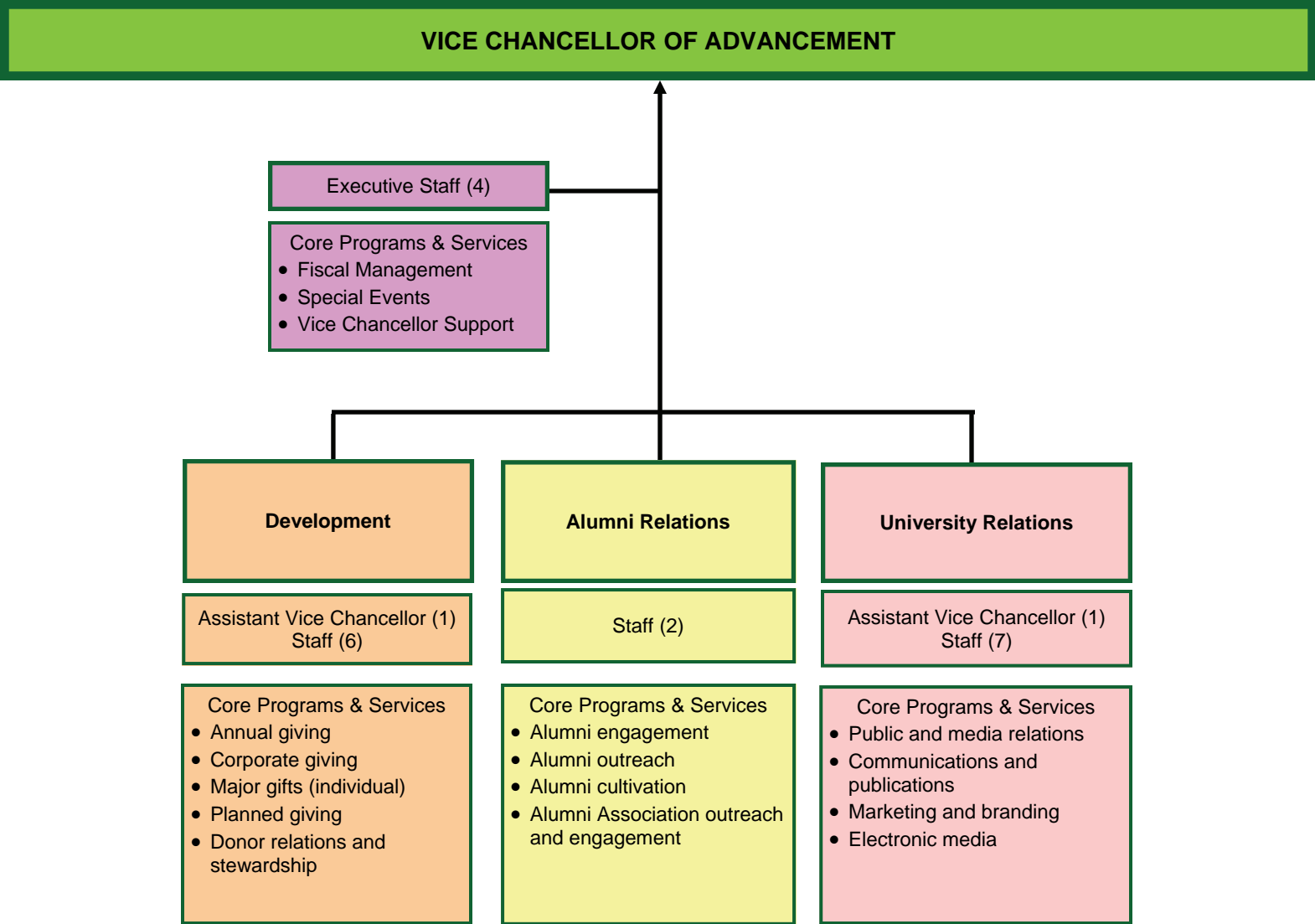
Student Affairs: Division of Enrollment Management: Organization Chart



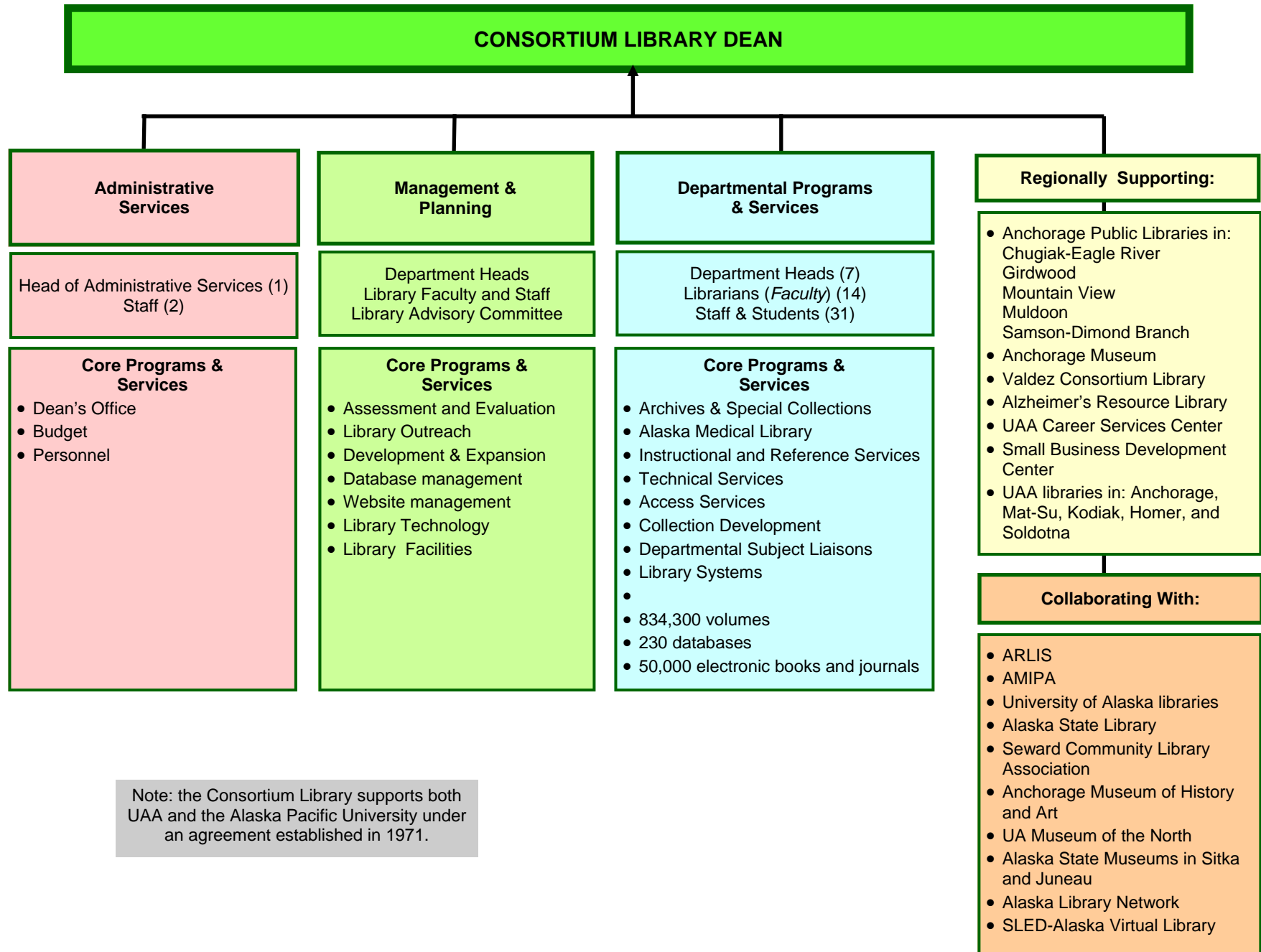
Student Affairs: Division of Student Development: Organization Chart



University Advancement: Organization Chart

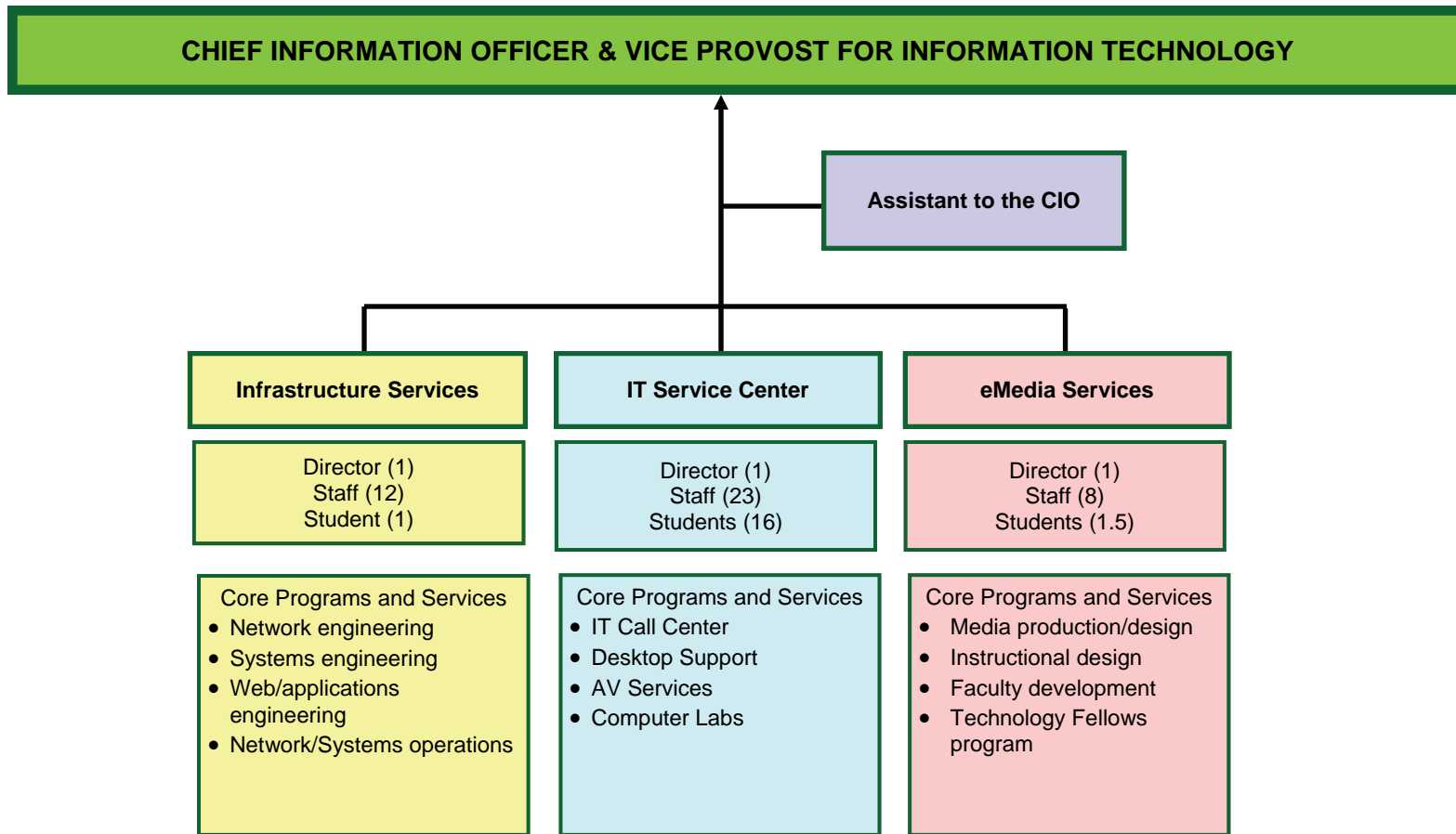


UAA/APU Consortium Library: Organization Chart

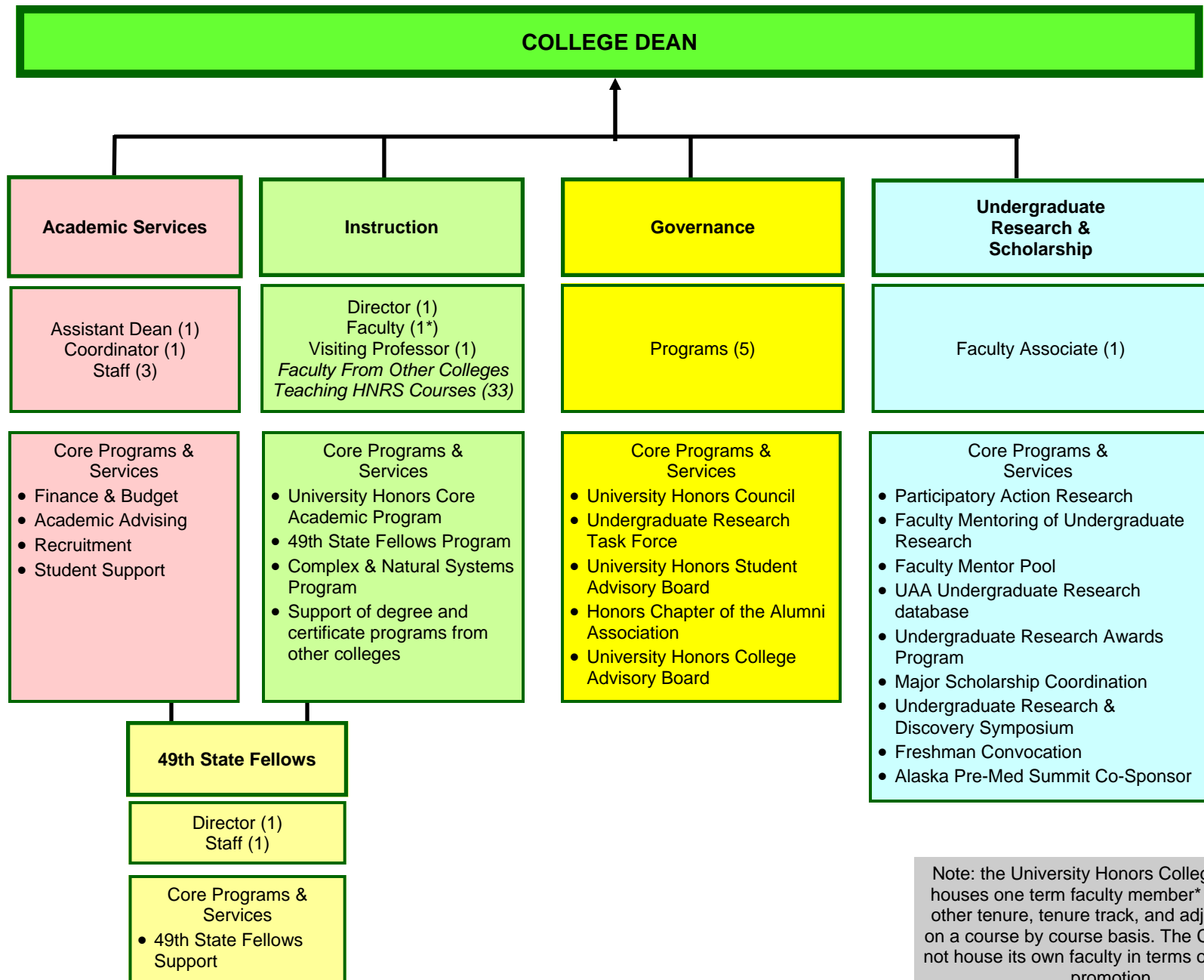


Note: the Consortium Library supports both UAA and the Alaska Pacific University under an agreement established in 1971.

Information Technology Services: Organization Chart

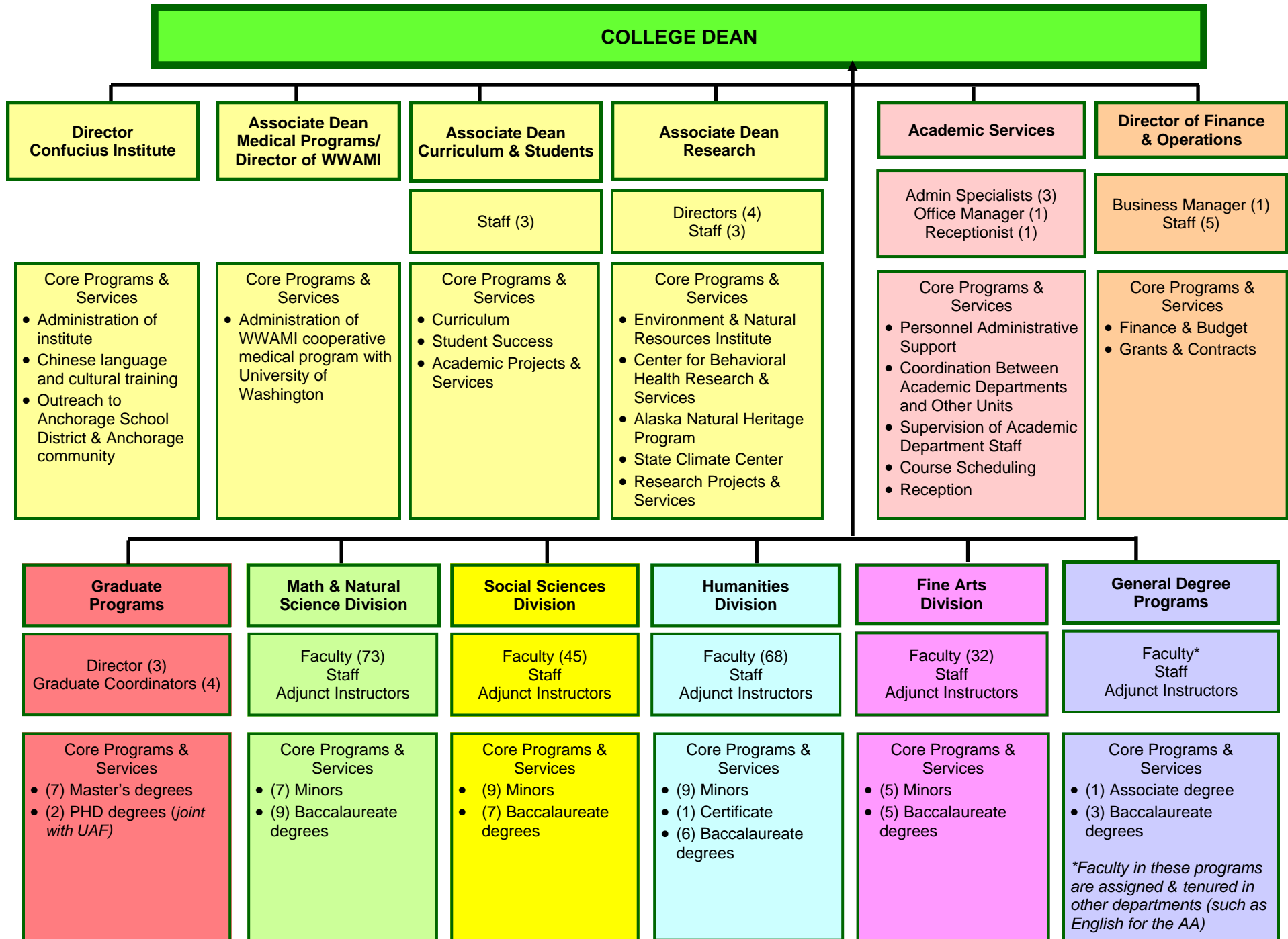


University Honors College: Organization Chart

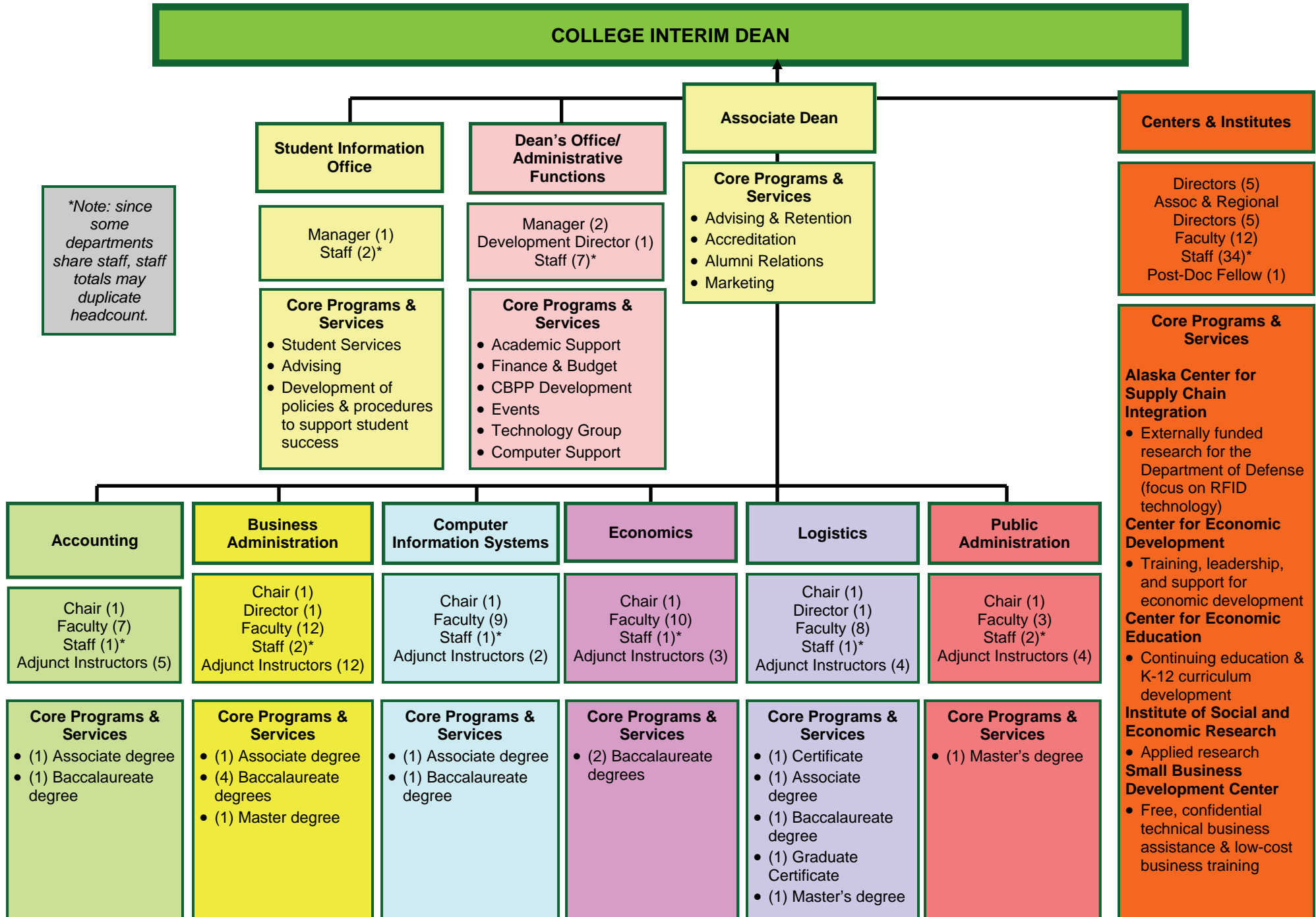


Note: the University Honors College currently houses one term faculty member* and shares other tenure, tenure track, and adjunct faculty on a course by course basis. The College does not house its own faculty in terms of tenure and promotion.

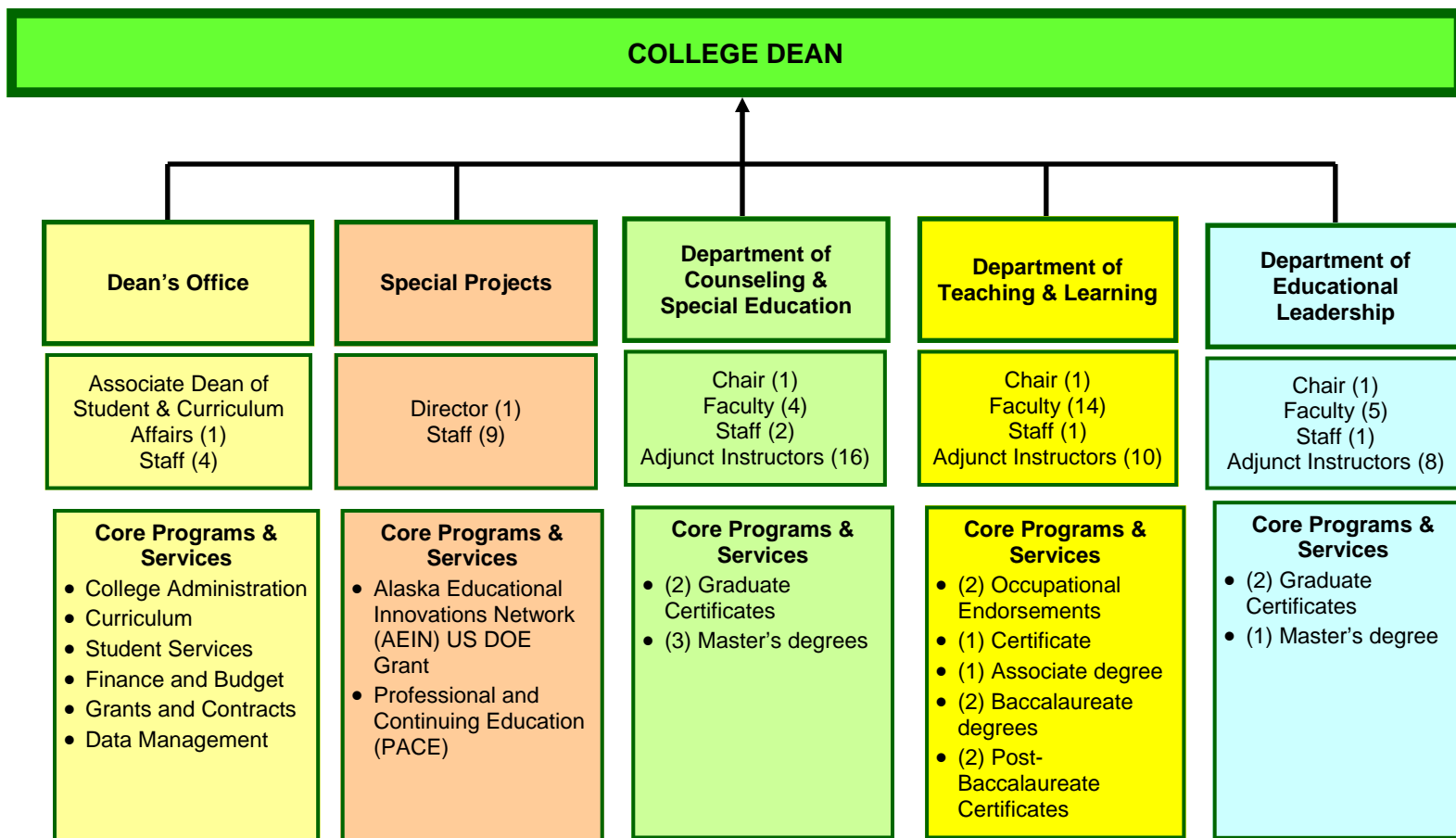
College of Arts and Sciences: Organization Chart



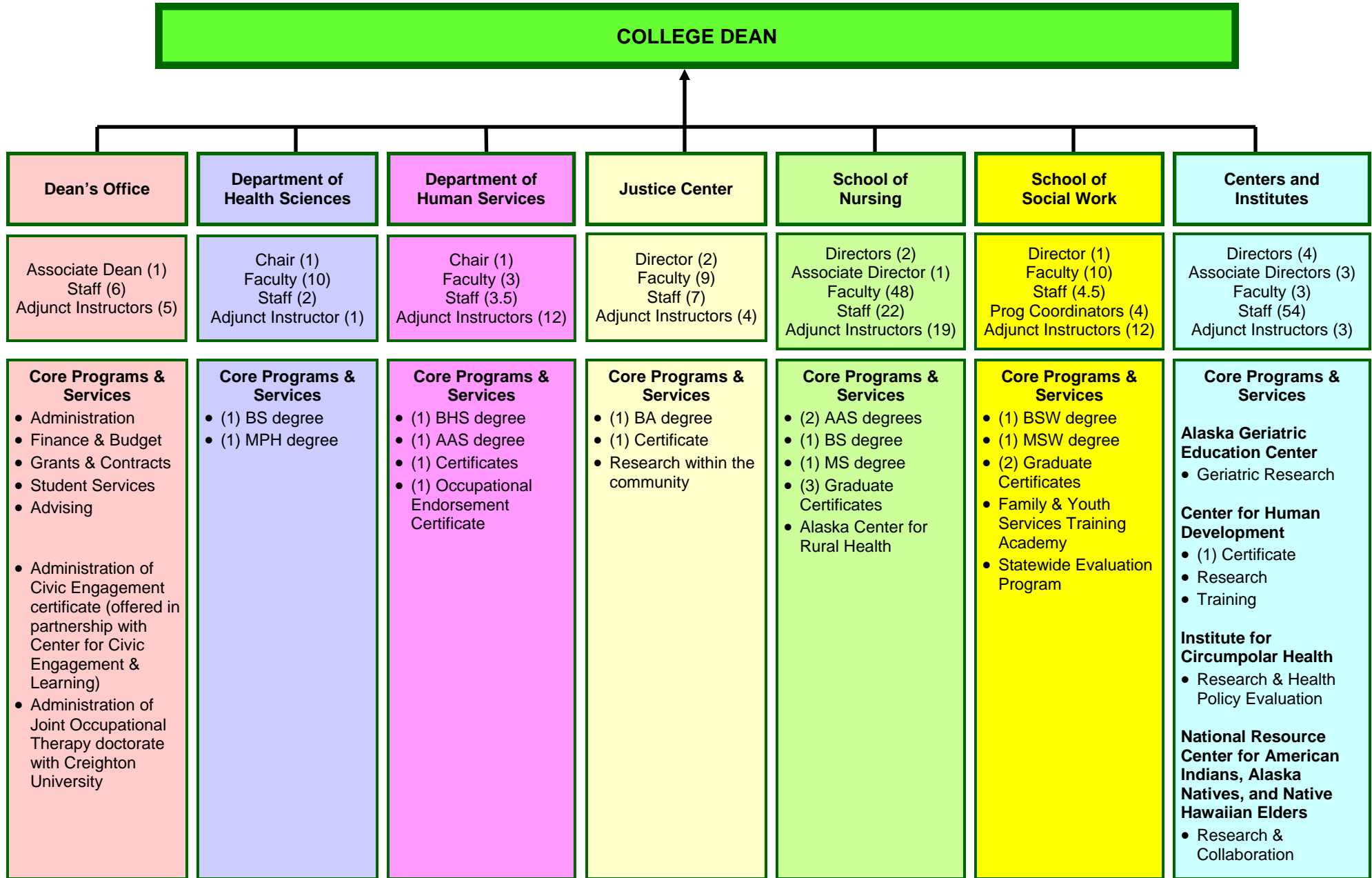
College of Business and Public Policy: Organization Chart



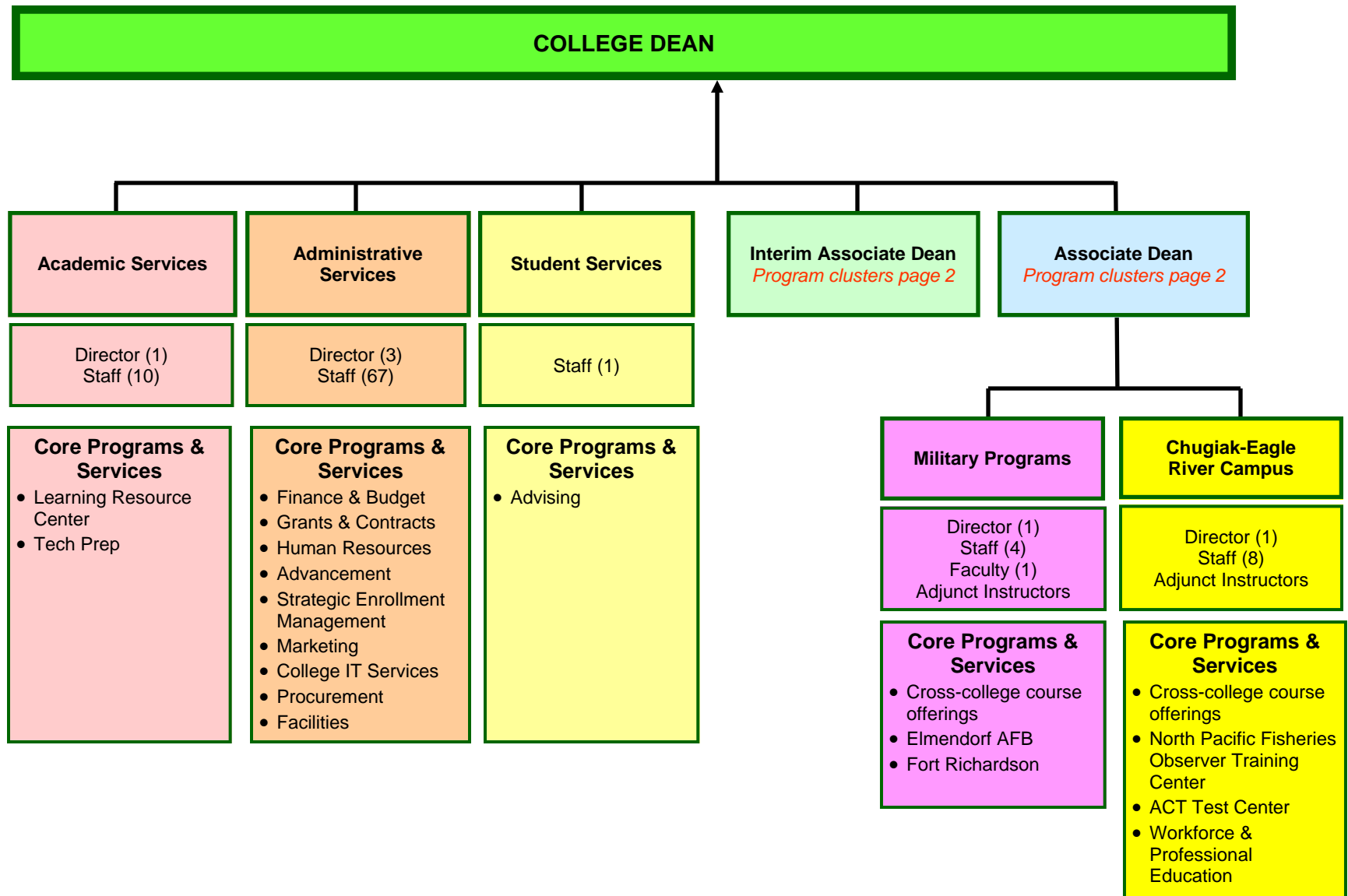
College of Education: Organization Chart

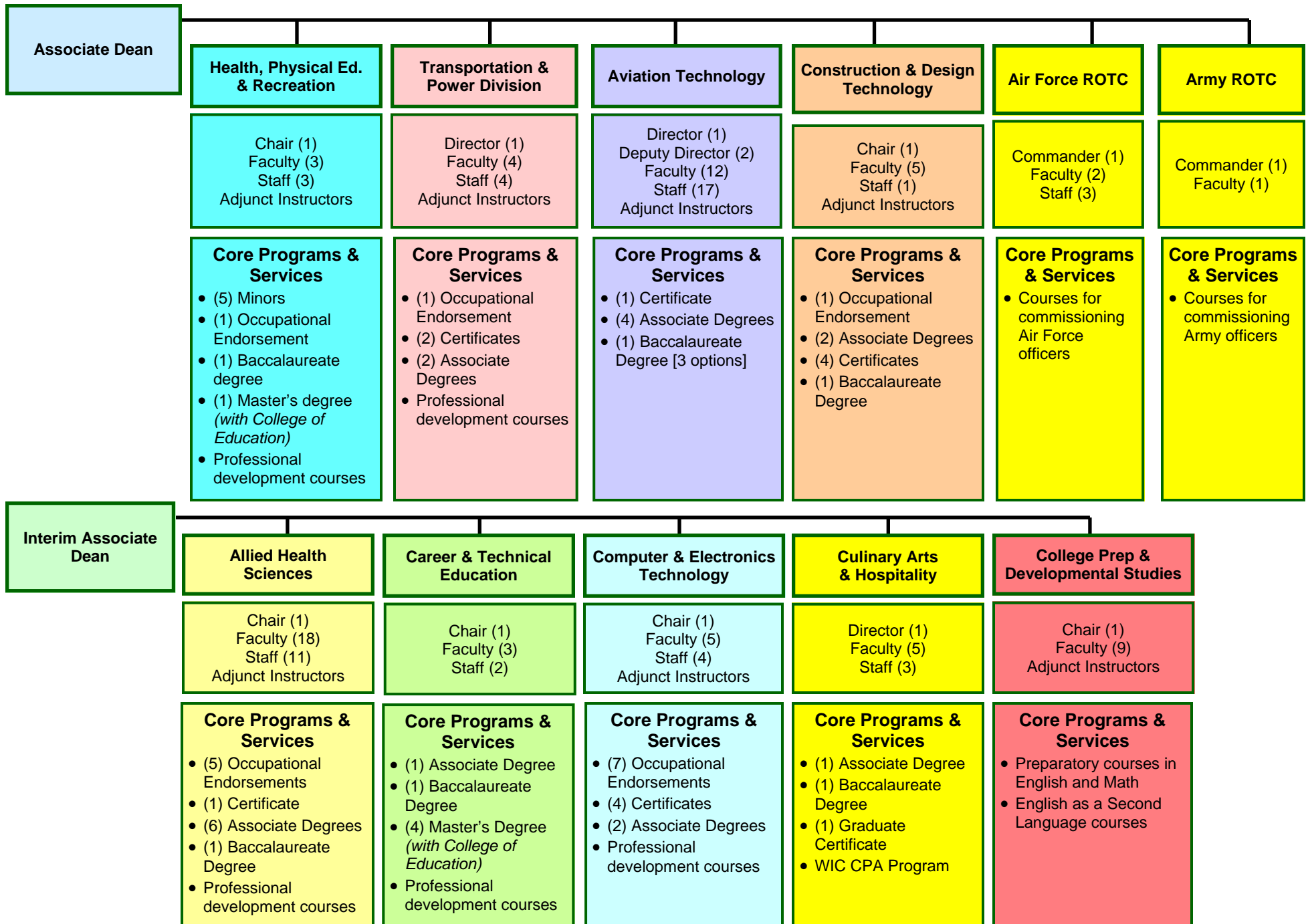


College of Health and Social Welfare: Organization Chart

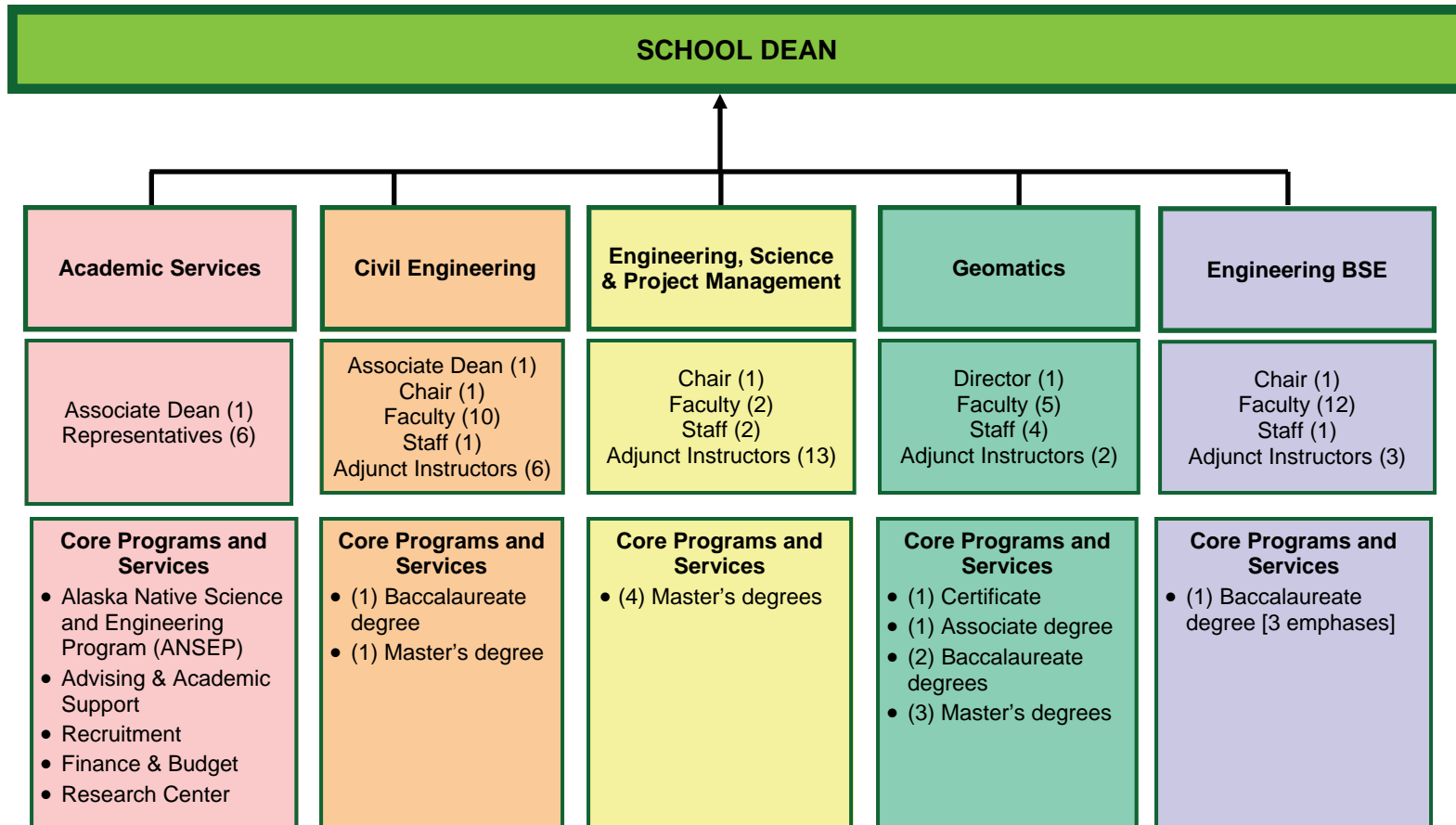


Community and Technical College: Organization Chart (Page 1)

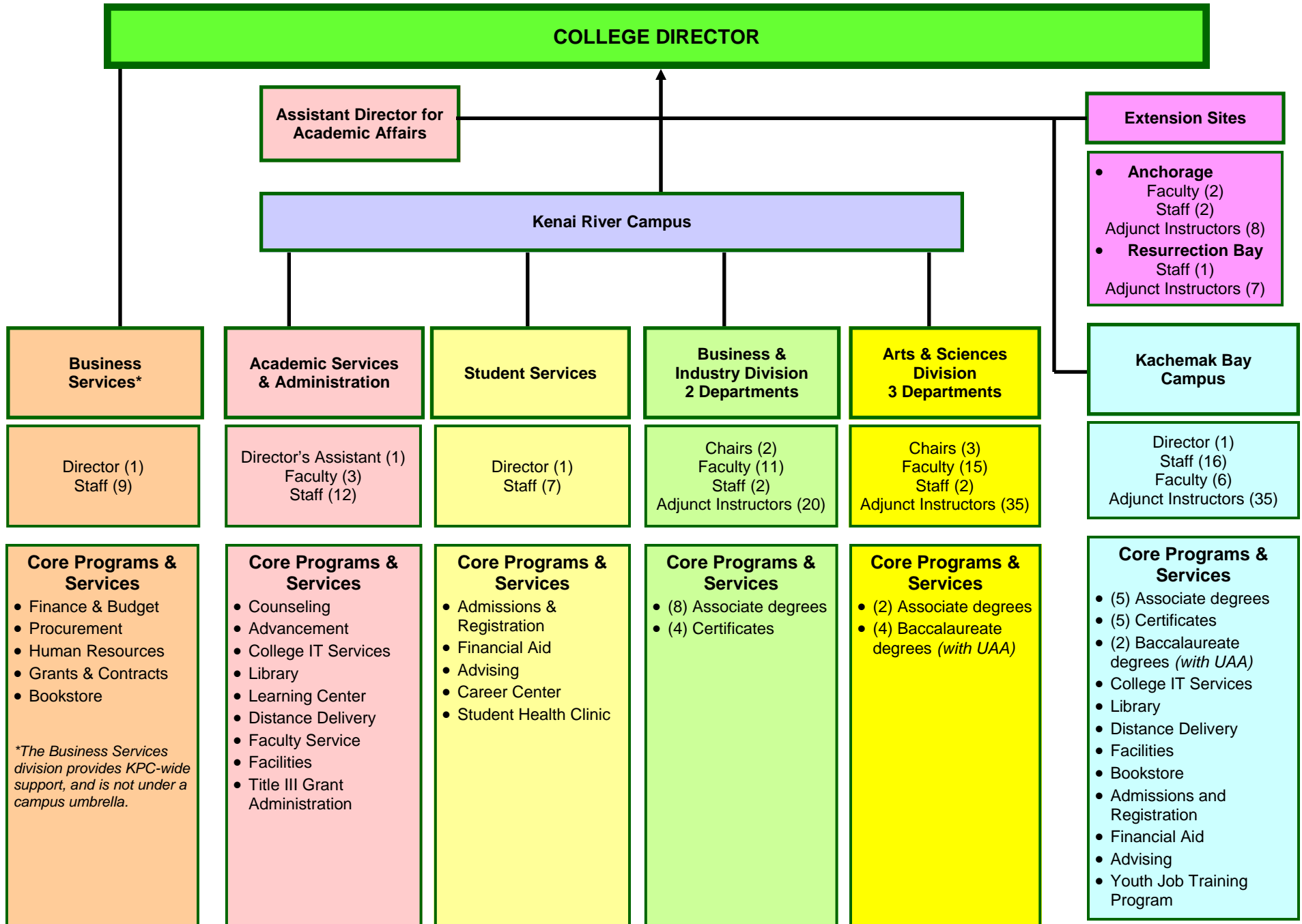




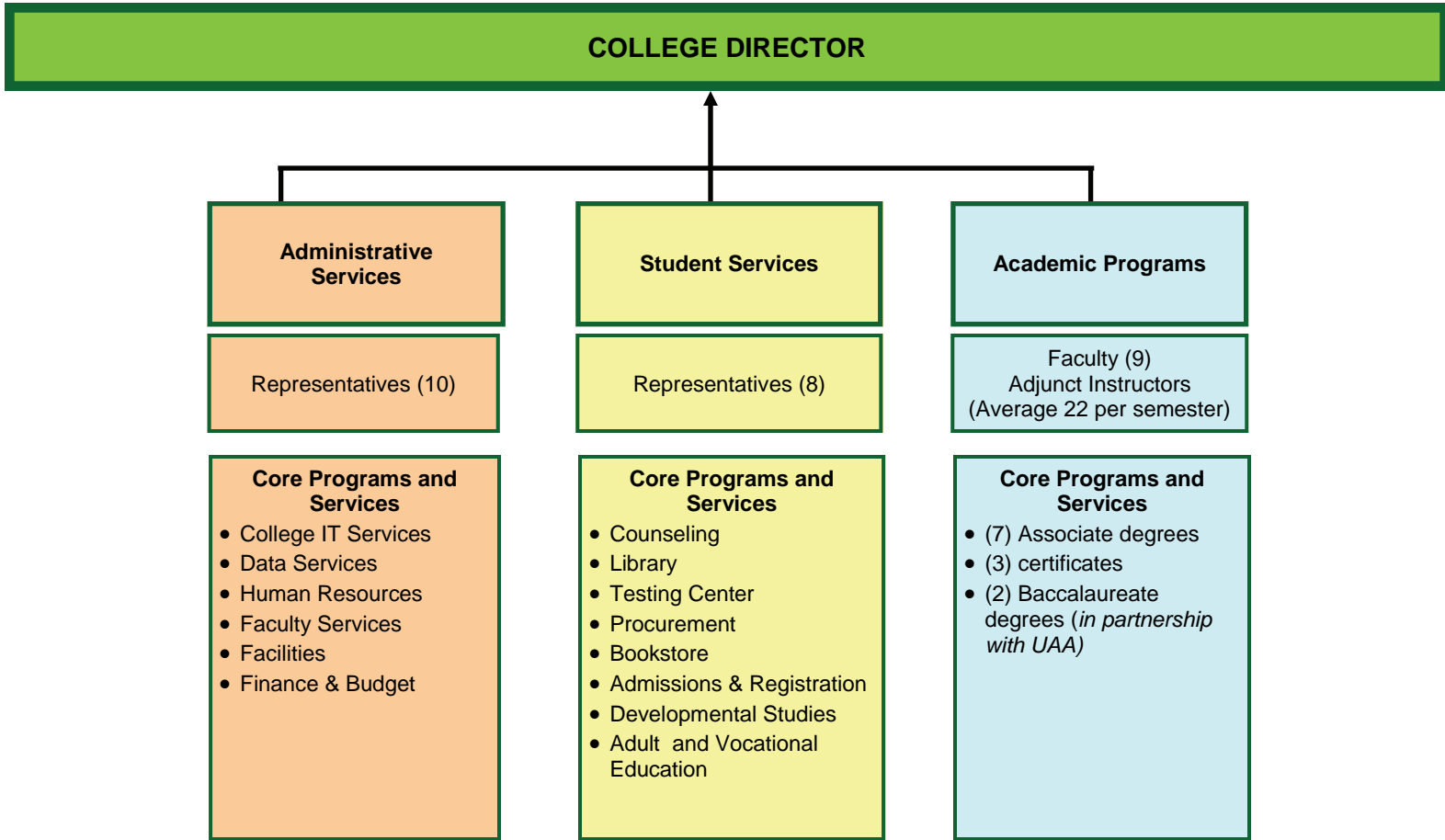
School of Engineering: Organization Chart



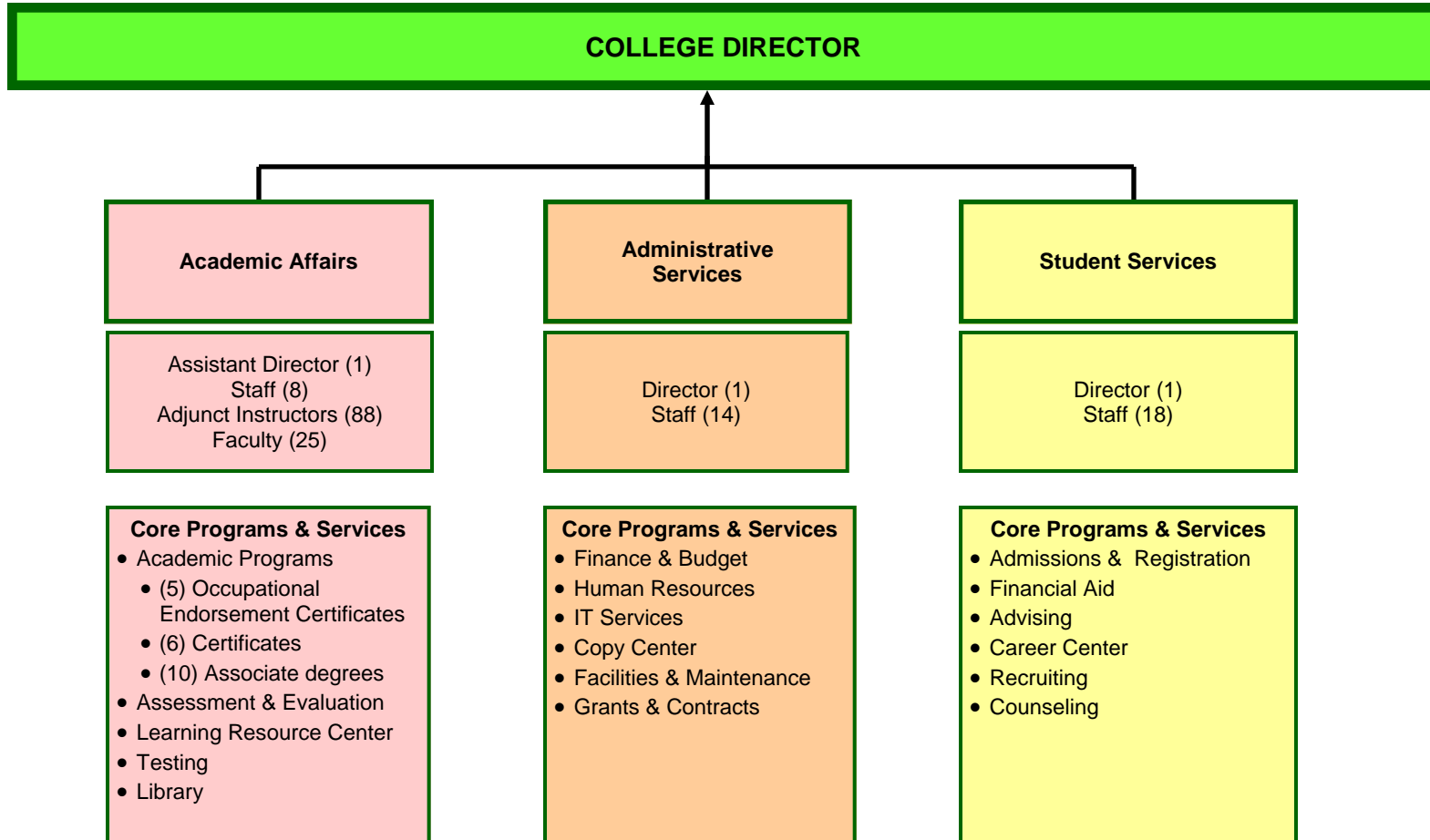
Kenai Peninsula College: Organization Chart



Kodiak College: Organization Chart



Matanuska-Susitna College: Organization Chart



Unit Profile Data Set
University of Alaska Anchorage
UAA MAU (Page 1 of 20)

Students: Fall 2007 (to be consistent with AY 07-08)

	Total	Lower (050-299)	Upper (300-499)	Post-BA (500-599)	Grad (600-699)	
Seat Count	126478	93782	21094	6259	5343	
					Grad (MA, Post- Bac)	Non-Degree Seeking
Unduplicated Headcount	19674	256	3168	7312	875	7588
Student Diversity	23.7%					
FT Students	7435					
PT Students	12239					
Student Age Profile						
17 & Under	747					
18	734					
19	1604					
20 - 24	6103					
25 - 29	3014					
30 - 39	2945					
40 - 49	2291					
50 - 59	1675					
60 & over	548					
Unspecified	13					

Curriculum: AY 2007/08 (the last full year data available prior to November 2009)

	Total	OEC & Certificate	Associate	Baccalaureate	Grad (MA, Post- Bac)	Non-Degree Seeking
Number of Programs (calc)	196	53	38	56	46	3
		Developmental	Lower	Upper	Post-BA	Grad
		(050-099)	(100-299)	(300-499)	(500-599)	(600-699)
Number of Course Sections	8355	259	5220	1620	540	716
SCH w/Auditors	339818.2	12678	239533	62895	9372	15341
Student/Faculty Ratio (Fall)	17.8					
Average Filled Seats per Class	15.9					
Average Empty Seats per Class	5.7					

Degree/Certificate: AY 2007/08

	Total	OEC & Certificate	Associate	Baccalaureate	Grad (MA, Post- Bac)
Number of Awards (06-07)	2,022.00	132	680	871	339
High Demand Job Area Awards	1,535.00	107	474	642	312
Graduation Rate*	23.20%	.	9.20%	24.40%	72.80%
Persistence (1st time, FT)	67.80%	65.00%	58.30%	70.40%	83.50%
Average Terms to Award	.	7.1	8.3	10.3	8.7
Average Credits to First Award	.	52.8	69.9	116.8	36
Success Grades	76.9%	73.9%	86.0%	85.9%	83.1%

*Cumulative # of degrees awarded 6 years after admission for degree-seeking students attending full-time.

Unit Profile Data Set
University of Alaska Anchorage
UAA MAU (Page 2 of 20)

Personnel: Fall 2007

Number of Regular Staff	1,024							
Number of Temporary Staff	261							
<i>Faculty</i>	<i>Number</i>	<i>Terminal Degree %</i>	<i>Years with UA</i>	<i>Workload assigned – FTE for College</i>				
				Teaching	Research	Service	Admin	Other
Regular (Ten Track & Term - Total)	575	60.20%	9.2	334.3	65.6	110	44.2	20.9
Professor	129	84.50%	20.5	64	15.3	25.7	16.4	7.6
Associate Professor	155	78.70%	10.3	83.8	20.1	29.7	11.4	10.1
Assistant Professor	233	45.90%	3.9	145.5	25.6	44.9	14.4	2.7
Instructor	58	13.80%	2.6	41	4.6	9.7	2.1	0.6
Tenured Faculty	260	78.80%	16.3	139.2	30.6	51.2	21.7	17.3
Adjunct Faculty	658	.	4.4
Staff % Minority	18.10%							
Faculty % Minority	10.30%							

Research: AY 2007/08

<i>Expenditures x 1000</i>	
Restricted Expenditures	27,573.8
Research Expenditures	7,185.2

Finance: AY 2007/08

<i>Expenditures x 1000</i>	
Personal Services	144,894.8
Travel	4,566.0
Contractual Services	39,461.3
Commodities	19,550.9
Equipment	1,879.6
Lands/Buildings	4,564.7
Student Aid	7,836.9
Miscellaneous	3,120.9
Total Expenditures	225,875.1
Instructional Expenditures per FTES	5

<i>Revenue x 1000</i>	
General Funds	101,862.0
Tuition/Fees	52,734.1
Intra-Agency Receipts	7,822.4
State RSAs	5,174.4
UA Receipts	18,599.9
Interst Income	200.2
Indirect Cost Recovery	3,380.8
CIP Receipts	838.5
Federal Receipts	21,249.9
Auxiliary Receipts	19,441.2
Total Revenue	231,303.4

Unit Profile Data Set
University of Alaska Anchorage
College of Arts and Sciences (Page 3 of 20)

Students: Fall 2007 (to be consistent with AY 07-08)

	Total	Lower (050-299)	Upper (300-499)	Post-BA (500-599)	Grad (600-699)	
Seat Count	48508	37379	9592	346	1191	
	Total	OEC & Certificate	Associate	Baccalaureate	Grad (MA, Post- Bac)	Non-Degree Seeking
Unduplicated Headcount	3934	3	344	3442	145	0
Student Diversity	26.1%					
FT Students	2597					
PT Students	1337					
Student Age Profile						
17 & Under	4					
18	92					
19	572					
20 - 24	1865					
25 - 29	607					
30 - 39	404					
40 - 49	143					
50 - 59	88					
60 & over	16					
Unspecified	0					

Curriculum: AY 2007/08 (the last full year data available prior to November 2009)

	Total	OEC & Certificate	Associate	Baccalaureate	Grad (MA, Post- Bac)	Non-Degree Seeking
Number of Programs (calc)	44	2	0	31	11	0
	Total	Developmental (050-099)	Lower (100-299)	Upper (300-499)	Post-BA (500-599)	Grad (600-699)
Number of Course Sections	2488	26	1387	805	36	234
SCH w/Auditors	138708	2913	103179	28747	484	3385
Student/Faculty Ratio (Fall)	25.2					
Average Filled Seats per Class	20.9					
Average Empty Seats per Class	2.9					

Degree/Certificate: AY 2007/08

	Total	OEC & Certificate	Associate	Baccalaureate	Grad (MA, Post- Bac)
Number of Awards (06-07)	503	.	98	368	37
High Demand Job Area Awards	195	.	.	185	10
Graduation Rate*	24.10%	.	2.30%	23.70%	61.30%
Persistence (1st time, FT)	71.60%	.	57.80%	71.70%	92.90%
Average Terms to Award	.	.	8.2	10.5	8.7
Average Credits to First Award	.	.	60.1	114.9	38.8
Success Grades	72.1%	69.7%	80.5%	90.8%	76.6%

*Cumulative # of degrees awarded 6 years after admission for degree-seeking students attending full-time.

Unit Profile Data Set
University of Alaska Anchorage
College of Arts and Sciences (Page 4 of 20)

Personnel: Fall 2007

Number of Regular Staff	74							
Number of Temporary Staff	20							
<i>Faculty</i>	<i>Number</i>	<i>Terminal Degree %</i>	<i>Years with UA</i>	<i>Workload assigned – FTE for College</i>				
				Teaching	Research	Service	Admin	Other
Regular (Ten Track & Term - Total)	214	72.40%	10.2	119.5	35.2	45.2	5.1	9
Professor	61	88.50%	21	31.4	9	13.9	3.7	3
Associate Professor	54	87.00%	11.4	26.8	10	10.8	1.4	5
Assistant Professor	60	80.00%	3.3	33.1	12.2	13.7	0	1
Instructor	39	15.40%	2.3	28.2	4	6.8	0	0
Tenured Faculty	112	87.50%	16.8	57	18.2	23.7	5.1	8
Adjunct Faculty	147	.	4.5
Staff % Minority	13.80%							
Faculty % Minority	14.10%							

Research: AY 2007/08

<i>Expenditures x 1000</i>	
Restricted Expenditures	3,669.4
Research Expenditures	2,959.0

Finance: AY 2007/08

<i>Expenditures (in thousands)</i>	
Personal Services	27336.7
Travel	642.0
Contractual Services	1632.5
Commodities	1310.4
Equipment	161.0
Lands/Buildings	-
Student Aid	71.6
Miscellaneous	(67.3)
Total Expenditures	31086.9
Instructional Expenditures per FTES	2.7

<i>Revenue (in thousands)</i>	
General Funds	10,827.2
Tuition/Fees	16,944.0
Intra-Agency Receipts	44.2
State RSAs	282.9
UA Receipts	1,229.7
Interest Income	0.0
Indirect Cost Recovery	391.6
CIP Receipts	0.0
Federal Receipts	2,652.8
Total Revenue	32,372.4

Unit Profile Data Set
University of Alaska Anchorage
College of Business and Public Policy (Page 5 of 20)

Students: Fall 2007 (to be consistent with AY 07-08)

	Total	Lower (050-299)	Upper (300-499)	Post-BA (500-599)	Grad (600-699)	
Seat Count	9990	5100	3624	498	768	
	Total	OEC & Certificate	Associate	Baccalaureate	Grad (MA, Post- Bac)	Non-Degree Seeking
Unduplicated Headcount	1461	3	170	1135	153	0
Student Diversity	31.4%					
FT Students	844					
PT Students	617					
Student Age Profile						
17 & Under	1					
18	18					
19	110					
20 - 24	626					
25 - 29	310					
30 - 39	205					
40 - 49	125					
50 - 59	34					
60 & over	3					
Unspecified	0					

Curriculum: AY 2007/08 (the last full year data available prior to November 2009)

	Total	OEC & Certificate	Associate	Baccalaureate	Grad (MA, Post- Bac)	Non-Degree Seeking
Number of Programs (calc)	20	3	5	8	4	0
	Total	Develop- mental (050-099)	Lower (100-299)	Upper (300-499)	Post-BA (500-599)	Grad (600-699)
Number of Course Sections	407	0	154	167	27	59
SCH w/Auditors	29632	0	15319	10872	962	2479
Student/Faculty Ratio (Fall)	28.2					
Average Filled Seats per Class	26.5					
Average Empty Seats per Class	8.4					

Degree/Certificate: AY 2007/08

	Total	OEC & Certificate	Associate	Baccalaureate	Grad (MA, Post- Bac)
Number of Awards (06-07)	249	3	25	175	46
High Demand Job Area Awards	249	3	25	175	46
Graduation Rate*	23.50%	.	7.40%	24.20%	66.70%
Persistence (1st time, FT)	69.40%	.	70.60%	66.70%	84.60%
Average Terms to Award	.	8	7.9	9.6	6.6
Average Credits to First Award	.	39	77.3	110.9	35
Success Grades	80.4%	71.8%	89.5%	91.2%	87.4%

*Cumulative # of degrees awarded 6 years after admission for degree-seeking students attending full-time.

Unit Profile Data Set
University of Alaska Anchorage
College of Business and Public Policy (Page 6 of 20)

Personnel: Fall 2007

Number of Regular Staff	67							
Number of Temporary Staff	8							
		<i>Terminal Degree %</i>	<i>Years with UA</i>	<i>Workload assigned – FTE for College</i>				
<i>Faculty</i>	<i>Number</i>			Teaching	Research	Service	Admin	Other
Regular (Ten Track & Term - Total)	56	76.80%	12.2	25.4	12.5	10.1	3.4	4.7
Professor	17	70.60%	22.6	6.9	3.3	3.1	1.2	2.6
Associate Professor	28	78.60%	9.8	14.5	4.2	4.9	2.2	2.1
Assistant Professor	11	81.80%	2.3	4	5	2	0	0
Tenured Faculty	39	74.40%	16.4	19.5	6	7.5	1.4	4.6
Adjunct Faculty	10	.	1.1
Staff % Minority	18.70%							
Faculty % Minority	21.20%							

Research: AY 2007/08

<i>Expenditures x 1000</i>	
Restricted Expenditures	5,366.5
Research Expenditures	2,845.6

Finance: AY 2007/08

<i>Expenditures (in thousands)</i>	
Personal Services	12945.6
Travel	482.4
Contractual Services	1145.6
Commodities	515.6
Equipment	23.8
Lands/Buildings	-
Student Aid	8.0
Miscellaneous	16.9
Total Expenditures	15137.9
Instructional Expenditures per FTES	3.6

<i>Revenue (in thousands)</i>	
General Funds	6092.8
Tuition/Fees	4076.1
Intra-Agency Receipts	3.4
State RSAs	223.3
UA Receipts	3136.3
Interest Income	2.5
Indirect Cost Recovery	387.7
CIP Receipts	-
Federal Receipts	2078.1
Total Revenue	16000.2

Unit Profile Data Set
University of Alaska Anchorage
College of Education (Page 7 of 20)

Students: Fall 2007 (to be consistent with AY 07-08)

	Total	Lower (050-299)	Upper (300-499)	Post-BA (500-599)	Grad (600-699)	
Seat Count	7542	475	1019	4251	1797	
	Total	OEC & Certificate	Associate	Baccalaureate	Grad (MA, Post- Bac)	Non-Degree Seeking
Unduplicated Headcount	787	9	32	449	297	0
Student Diversity	19.3%					
FT Students	409					
PT Students	378					
Student Age Profile						
17 & Under	1					
18	8					
19	39					
20 - 24	244					
25 - 29	113					
30 - 39	153					
40 - 49	126					
50 - 59	52					
60 & over	3					
Unspecified	0					

Curriculum: AY 2007/08 (the last full year data available prior to November 2009)

	Total	OEC & Certificate	Associate	Baccalaureate	Grad (MA, Post- Bac)	Non-Degree Seeking
Number of Programs (calc)	18	3	1	2	12	0
	Total	Developmental (050-099)	Lower (100-299)	Upper (300-499)	Post-BA (500-599)	Grad (600-699)
Number of Course Sections	728	0	39	71	378	240
SCH w/Auditors	15268	0	1243	2934	6258	4833
Student/Faculty Ratio (Fall)	13.1					
Average Filled Seats per Class	9.9					
Average Empty Seats per Class	8.6					

Degree/Certificate: AY 2007/08

	Total	OEC & Certificate	Associate	Baccalaureate	Grad (MA, Post- Bac)
Number of Awards (06-07)	219	.	14	40	165
High Demand Job Area Awards	219	.	14	40	165
Graduation Rate*	27.80%	.	.	25.00%	55.60%
Persistence (1st time, FT)	61.30%	50.00%	100.00%	59.10%	61.50%
Average Terms to Award	.	.	10.6	11.6	9.1
Average Credits to First Award	.	.	67.1	142.9	35
Success Grades	86.1%	83.8%	93.1%	85.4%	84.1%

*Cumulative # of degrees awarded 6 years after admission for degree-seeking students attending full-time.

Unit Profile Data Set
University of Alaska Anchorage
College of Education (Page 8 of 20)

Personnel: Fall 2007

Number of Regular Staff	21							
Number of Temporary Staff	0							
		<i>Terminal Degree %</i>	<i>Years with UA</i>	<i>Workload assigned – FTE for College</i>				
<i>Faculty</i>	<i>Number</i>			Teaching	Research	Service	Admin	Other
Regular (Ten Track & Term - Total)	37	56.80%	5.8	17.7	5.5	7	5.8	1
Professor	6	100.00%	17.8	2.8	0.6	1	1.6	0
Associate Professor	7	100.00%	4.4	2.9	1.6	1.1	0.4	1
Assistant Professor	23	34.80%	3.2	11.8	3.3	4.5	3.4	0
Instructor	1	.	3.8	0.2	0	0.4	0.4	0
Tenured Faculty	8	100.00%	16.2	3.3	1.5	1.2	1	1
Adjunct Faculty	40	.	2.2
Staff % Minority	19.00%							
Faculty % Minority	5.20%							

Research: AY 2007/08

<i>Expenditures x 1000</i>	
Restricted Expenditures	1,305.7
Research Expenditures	(0.1)

Finance: AY 2007/08

<i>Expenditures (in thousands)</i>	
Personal Services	5639.7
Travel	177.4
Contractual Services	746.7
Commodities	76.0
Equipment	26.2
Lands/Buildings	-
Student Aid	56.5
Miscellaneous	2.3
Total Expenditures	6724.8
Instructional Expenditures per FTES	3.6

<i>Revenue (in thousands)</i>	
General Funds	2442.6
Tuition/Fees	2699.3
Intra-Agency Receipts	-
State RSAs	(0.7)
UA Receipts	6.2
Interest Income	-
Indirect Cost Recovery	28.4
CIP Receipts	-
Federal Receipts	1302.8
Total Revenue	6478.6

Unit Profile Data Set
University of Alaska Anchorage
College of Health and Social Welfare (Page 9 of 20)

Students: Fall 2007 (to be consistent with AY 07-08)

	Total	Lower (050-299)	Upper (300-499)	Post-BA (500-599)	Grad (600-699)	
Seat Count	7524	3395	3183	6	940	
	Total	OEC & Certificate	Associate	Baccalaureate	Grad (MA, Post- Bac)	Non-Degree Seeking
Unduplicated Headcount	1883	69	475	1188	151	0
Student Diversity	31.0%					
FT Students	902					
PT Students	981					
Student Age Profile						
17 & Under	0					
18	30					
19	136					
20 - 24	646					
25 - 29	370					
30 - 39	365					
40 - 49	219					
50 - 59	107					
60 & over	6					
Unspecified	0					

Curriculum: AY 2007/08 (the last full year data available prior to November 2009)

	Total	OEC & Certificate	Associate	Baccalaureate	Grad (MA, Post- Bac)	Non-Degree Seeking
Number of Programs (calc)	20	4	3	5	8	0
	Total	Developmental (050-099)	Lower (100-299)	Upper (300-499)	Post-BA (500-599)	Grad (600-699)
Number of Course Sections	608	0	262	244	2	100
SCH w/Auditors	21780	0	9297	9764	6	2713
Student/Faculty Ratio (Fall)	13.4					
Average Filled Seats per Class	12.8					
Average Empty Seats per Class	4.0					

Degree/Certificate: AY 2007/08

	Total	OEC & Certificate	Associate	Baccalaureate	Grad (MA, Post- Bac)
Number of Awards (06-07)	406	37	123	197	49
High Demand Job Area Awards	350	27	123	151	49
Graduation Rate*	28.10%	.	7.00%	26.90%	100.00%
Persistence (1st time, FT)	63.60%	50.00%	50.00%	66.90%	62.50%
Average Terms to Award	.	6.6	9.8	9.8	8.9
Average Credits to First Award	.	51.3	66.6	115.6	43.3
Success Grades	91.1%	87.8%	95.2%	100.0%	88.9%

*Cumulative # of degrees awarded 6 years after admission for degree-seeking students attending full-time.

Unit Profile Data Set
University of Alaska Anchorage
College of Health and Social Welfare (Page 10 of 20)

Personnel: Fall 2007

Number of Regular Staff	93							
Number of Temporary Staff	28							
		<i>Terminal Degree %</i>	<i>Years with UA</i>	<i>Workload assigned – FTE for College</i>				
<i>Faculty</i>	<i>Number</i>			Teaching	Research	Service	Admin	Other
Regular (Ten Track & Term - Total)	75	45.30%	7.4	45.1	4.5	14.4	9.6	1.5
Professor	12	91.70%	17.8	3.9	1	2	4.2	1
Associate Professor	17	70.60%	9.4	8.6	1.8	3.8	2.7	0.3
Assistant Professor	44	25.00%	4.1	31.3	1.8	8.5	2.3	0.2
Instructor	2	.	3.1	1.5	0	0.1	0.5	0
Tenured Faculty	21	76.20%	15.8	8.7	2.3	4.6	4.5	1
Adjunct Faculty	29	.	1.6
Staff % Minority	18.20%							
Faculty % Minority	9.60%							

Research: AY 2007/08

<i>Expenditures x 1000</i>	
Restricted Expenditures	7,104.2
Research Expenditures	816.7

Finance: AY 2007/08

<i>Expenditures (in thousands)</i>	
Personal Services	15241.5
Travel	619.2
Contractual Services	2813.2
Commodities	559.7
Equipment	83.3
Lands/Buildings	-
Student Aid	559.9
Miscellaneous	(5.9)
Total Expenditures	19870.9
Instructional Expenditures per FTES	6.0

<i>Revenue (in thousands)</i>	
General Funds	9343.1
Tuition/Fees	3316.7
Intra-Agency Receipts	68.7
State RSAs	2420.2
UA Receipts	962.4
Interest Income	-
Indirect Cost Recovery	256.6
CIP Receipts	-
Federal Receipts	3726.4
Total Revenue	20094.1

Unit Profile Data Set
University of Alaska Anchorage
Community and Technical College (Page 11 of 20)

Students: Fall 2007 (to be consistent with AY 07-08)

	Total	Lower (050-299)	Upper (300-499)	Post-BA (500-599)	Grad (600-699)	
Seat Count	25382	23274	1641	419	48	
	Total	OEC & Certificate	Associate	Baccalaureate	Grad (MA, Post- Bac)	Non-Degree Seeking
Unduplicated Headcount	1478	103	819	549	7	0
Student Diversity	27.6%					
FT Students	861					
PT Students	617					
Student Age Profile						
17 & Under	2					
18	20					
19	146					
20 - 24	572					
25 - 29	255					
30 - 39	149					
40 - 49	88					
50 - 59	49					
60 & over	8					
Unspecified	0					

Curriculum: AY 2007/08 (the last full year data available prior to November 2009)

	Total	OEC & Certificate	Associate	Baccalaureate	Grad (MA, Post- Bac)	Non-Degree Seeking
Number of Programs (calc)	76	40	27	7	2	0
	Total	Developmental (050-099)	Lower (100-299)	Upper (300-499)	Post-BA (500-599)	Grad (600-699)
Number of Course Sections	1803	91	1533	130	35	14
SCH w/Auditors	66473.5	5625	55440	4799	480	130
Student/Faculty Ratio (Fall)	15.5					
Average Filled Seats per Class	14.9					
Average Empty Seats per Class	4.0					

Degree/Certificate: AY 2007/08

	Total	OEC & Certificate	Associate	Baccalaureate	Grad (MA, Post- Bac)
Number of Awards (06-07)	341	69	214	53	5
High Demand Job Area Awards	308	60	190	53	5
Graduation Rate*	12.80%	.	10.70%	18.90%	.
Persistence (1st time, FT)	70.80%	62.50%	71.30%	71.20%	.
Average Terms to Award	.	6.6	7.2	9.9	27
Average Credits to First Award	.	54	72.5	121.7	38
Success Grades	76.6%	75.5%	89.5%	84.5%	83.3%

*Cumulative # of degrees awarded 6 years after admission for degree-seeking students attending full-time.

Unit Profile Data Set
University of Alaska Anchorage
Community and Technical College (Page 12 of 20)

Personnel: Fall 2007

Number of Regular Staff	85							
Number of Temporary Staff	53							
		<i>Terminal Degree %</i>	<i>Years with UA</i>	<i>Workload assigned – FTE for College</i>				
<i>Faculty</i>	<i>Number</i>			Teaching	Research	Service	Admin	Other
Regular (Ten Track & Term - Total)	76	25.00%	8.1	52.6	0.7	13.3	8.3	1.1
Professor	5	80.00%	27.3	4	0	0.9	0.1	0
Associate Professor	18	61.10%	12.8	11.4	0.7	3.3	1.6	1
Assistant Professor	44	9.10%	5	30.7	0	7.5	5.6	0.2
Instructor	9	.	3.3	6.5	0	1.5	1	0
Tenured Faculty	25	56.00%	17.3	17.6	0.7	4.6	1.1	1
Adjunct Faculty	180	.	3.9
Staff % Minority	17.40%							
Faculty % Minority	8.60%							

Research: AY 2007/08

<i>Expenditures x 1000</i>	
Restricted Expenditures	1,893.4
Research Expenditures	(25.3)

Finance: AY 2007/08

<i>Expenditures (in thousands)</i>	
Personal Services	16231.9
Travel	296.1
Contractual Services	1726.5
Commodities	1213.2
Equipment	475.1
Lands/Buildings	-
Student Aid	12.0
Miscellaneous	103.0
Total Expenditures	20057.8
Instructional Expenditures per FTES	3.6

<i>Revenue (in thousands)</i>	
General Funds	8829.4
Tuition/Fees	8630.8
Intra-Agency Receipts	57.1
State RSAs	720.0
UA Receipts	892.6
Interest Income	-
Indirect Cost Recovery	101.5
CIP Receipts	-
Federal Receipts	786.4
Total Revenue	20017.8

Unit Profile Data Set
University of Alaska Anchorage
School of Engineering (Page 13 of 20)

Students: Fall 2007 (to be consistent with AY 07-08)

	Total	Lower (050-299)	Upper (300-499)	Post-BA (500-599)	Grad (600-699)	
Seat Count	3215	1239	1248	130	598	
	Total	OEC & Certificate	Associate	Baccalaureate	Grad (MA, Post- Bac)	Non-Degree Seeking
Unduplicated Headcount	685	6	8	549	122	0
Student Diversity	29.9%					
FT Students	464					
PT Students	221					
Student Age Profile						
17 & Under	0					
18	8					
19	80					
20 - 24	261					
25 - 29	126					
30 - 39	116					
40 - 49	50					
50 - 59	31					
60 & over	2					
Unspecified	0					

Curriculum: AY 2007/08 (the last full year data available prior to November 2009)

	Total	OEC & Certificate	Associate	Baccalaureate	Grad (MA, Post- Bac)	Non-Degree Seeking
Number of Programs (calc)	14	1	1	3	9	0
	Total	Developmental (050-099)	Lower (100-299)	Upper (300-499)	Post-BA (500-599)	Grad (600-699)
Number of Course Sections	226	0	59	91	8	68
SCH w/Auditors	8996	0	3426	3481	290	1799
Student/Faculty Ratio (Fall)	16.8					
Average Filled Seats per Class	15.7					
Average Empty Seats per Class	11.4					

Degree/Certificate: AY 2007/08

	Total	OEC & Certificate	Associate	Baccalaureate	Grad (MA, Post- Bac)
Number of Awards (06-07)	84	3	6	38	37
High Demand Job Area Awards	84	3	6	38	37
Graduation Rate*	53.20%	.	.	34.50%	83.30%
Persistence (1st time, FT)	80.20%	.	.	77.20%	94.10%
Average Terms to Award	.	9	9	12.1	8.2
Average Credits to First Award	.	28	91.2	132.2	29.2
Success Grades	80.7%	75.1%	85.4%	98.5%	78.3%

*Cumulative # of degrees awarded 6 years after admission for degree-seeking students attending full-time.

Unit Profile Data Set
University of Alaska Anchorage
School of Engineering (Page 14 of 20)

Personnel: Fall 2007

Number of Regular Staff	12							
Number of Temporary Staff	1							
		<i>Terminal Degree %</i>	<i>Years with UA</i>	<i>Workload assigned – FTE for College</i>				
<i>Faculty</i>	<i>Number</i>			Teaching	Research	Service	Admin	Other
Regular (Ten Track & Term - Total)	24	79.20%	7.3	13.2	4.7	4.7	1.2	0.2
Professor	9	88.90%	15.7	4.6	1.1	2.2	1.2	0
Associate Professor	6	83.30%	1.7	3.7	1.3	1.1	0	0
Assistant Professor	7	85.70%	2.6	3.3	2.4	1.3	0	0
Instructor	2	.	3.7	1.6	0	0.2	0	0.2
Tenured Faculty	9	88.90%	15.7	4.6	1.1	2.2	1.2	0
Adjunct Faculty	20	.	2.1
Staff % Minority	61.50%							
Faculty % Minority	13.60%							

Research: AY 2007/08

<i>Expenditures x 1000</i>	
Restricted Expenditures	1,678.3
Research Expenditures	418.5

Finance: AY 2007/08

<i>Expenditures (in thousands)</i>	
Personal Services	4687.4
Travel	350.2
Contractual Services	788.9
Commodities	685.2
Equipment	111.6
Lands/Buildings	-
Student Aid	350.5
Miscellaneous	(3.2)
Total Expenditures	6970.6
Instructional Expenditures per FTES	7.4

<i>Revenue (in thousands)</i>	
General Funds	2802.7
Tuition/Fees	1967.6
Intra-Agency Receipts	211.0
State RSAs	26.5
UA Receipts	964.6
Interst Income	-
Indirect Cost Recovery	63.5
CIP Receipts	-
Federal Receipts	775.7
Total Revenue	6811.6

Unit Profile Data Set
University of Alaska Anchorage
Kenai Peninsula College (Page 15 of 20)

Students: Fall 2007 (to be consistent with AY 07-08)

	Total	Lower (050-299)	Upper (300-499)	Post-BA (500-599)	Grad (600-699)	
Seat Count	7649	6892	350	407	0	
	Total	OEC & Certificate	Associate	Baccalaureate	Grad (MA, Post- Bac)	Non-Degree Seeking
Unduplicated Headcount	1248	25	497	0	0	726
Student Diversity	11.4%					
FT Students	280					
PT Students	968					
Student Age Profile						
17 & Under	70					
18	150					
19	105					
20 - 24	325					
25 - 29	179					
30 - 39	199					
40 - 49	236					
50 - 59	195					
60 & over	119					
Unspecified	2					

Curriculum: AY 2007/08 (the last full year data available prior to November 2009)

	Total	OEC & Certificate	Associate	Baccalaureate	Grad (MA, Post- Bac)	Non-Degree Seeking
Number of Programs (calc)	14	4	10	-	-	-
	Total	Developmental (050-099)	Lower (100-299)	Upper (300-499)	Post-BA (500-599)	Grad (600-699)
Number of Course Sections	641	32	527	51	31	0
SCH w/Auditors	20654	1104	17982	1038	530	0
Student/Faculty Ratio (Fall)	12.7					
Average Filled Seats per Class	12.3					
Average Empty Seats per Class	6.4					
				Distance Delivered Courses	43	

Degree/Certificate: AY 2007/08

	Total	OEC & Certificate	Associate	Baccalaureate	Grad (MA, Post- Bac)
Number of Awards (06-07)	110	9	101	.	.
High Demand Job Area Awards	80	7	73	.	.
Graduation Rate*	11.10%	.	11.10%	.	.
Persistence (1st time, FT)	50.00%	50.00%	50.00%	.	.
Average Terms to Award	.	6.8	8.5	.	.
Average Credits to First Award	.	50.3	72.5	.	.
Success Grades	75.1%	74.6%	81.1%	77.9%	0.0%

*Cumulative # of degrees awarded 6 years after admission for degree-seeking students attending full-time.

Unit Profile Data Set
University of Alaska Anchorage
Kenai Peninsula College (Page 16 of 20)

Personnel: Fall 2007

Number of Regular Staff	56							
Number of Temporary Staff	18							
		<i>Terminal Degree %</i>	<i>Years with UA</i>	<i>Workload assigned – FTE for College</i>				
<i>Faculty</i>	<i>Number</i>			Teaching	Research	Service	Admin	Other
Regular (Ten Track & Term - Total)	30	53.30%	10.6	21.5	0.3	5.3	1.5	1.5
Professor	5	100.00%	22.1	2.9	0.2	0.8	0.2	1
Associate Professor	10	70.00%	12.6	6.8	0.1	1.9	1.1	0.1
Assistant Professor	14	28.60%	5.7	11.2	0	2.4	0	0.4
Instructor	1	.	2.2	0.6	0	0.2	0.2	0
Tenured Faculty	16	75.00%	16.2	10.5	0.3	2.9	1.3	1.1
Adjunct Faculty	103	.	7.3
Staff % Minority	2.70%							
Faculty % Minority	5.30%							

Research: AY 2007/08

<i>Expenditures x 1000</i>	
Restricted Expenditures	1,163.5
Research Expenditures	29.5

Finance: AY 2007/08

<i>Expenditures (in thousands)</i>	
Personal Services	8434.2
Travel	351.3
Contractual Services	1448.3
Commodities	748.1
Equipment	69.6
Lands/Buildings	384.1
Student Aid	258.0
Miscellaneous	(220.7)
Total Expenditures	11472.9
Instructional Expenditures per FTES	4.3

<i>Revenue (in thousands)</i>	
General Funds	7062.4
Tuition/Fees	2591.0
Intra-Agency Receipts	0.2
State RSAs	392.1
UA Receipts	1151.5
Interst Income	-
Indirect Cost Recovery	43.6
CIP Receipts	-
Federal Receipts	132.6
Total Revenue	11373.4

Unit Profile Data Set
University of Alaska Anchorage
Kodiak College (Page 17 of 20)

Students: Fall 2007 (to be consistent with AY 07-08)

	Total	Lower (050-299)	Upper (300-499)	Post-BA (500-599)	Grad (600-699)	
Seat Count	2450	2297	51	101	1	
	Total	OEC & Certificate	Associate	Baccalaureate	Grad (MA, Post- Bac)	Non-Degree Seeking
Unduplicated Headcount	459	8	144	0	0	307
Student Diversity	27.0%					
FT Students	54					
PT Students	405					
Student Age Profile						
17 & Under	27					
18	14					
19	32					
20 - 24	76					
25 - 29	62					
30 - 39	90					
40 - 49	109					
50 - 59	92					
60 & over	38					
Unspecified	0					

Curriculum: AY 2007/08 (the last full year data available prior to November 2009)

	Total	OEC & Certificate	Associate	Baccalaureate	Grad (MA, Post- Bac)	Non-Degree Seeking
Number of Programs (calc)	10	3	7	-	-	-
	Total	Developmental (050-099)	Lower (100-299)	Upper (300-499)	Post-BA (500-599)	Grad (600-699)
Number of Course Sections	231	15	195	11	9	1
SCH w/Auditors	5667	474	4806	165	220	2
Student/Faculty Ratio (Fall)	12.0					
Average Filled Seats per Class	11.4					
Average Empty Seats per Class	10.9					

Degree/Certificate: AY 2007/08

	Total	OEC & Certificate	Associate	Baccalaureate	Grad (MA, Post- Bac)
Number of Awards (06-07)	11	1	10	.	.
High Demand Job Area Awards	3	.	3	.	.
Graduation Rate*	11.10%	.	11.10%	.	.
Persistence (1st time, FT)	36.40%	100.00%	33.30%	.	.
Average Terms to Award	.	.	8.4	.	.
Average Credits to First Award	.	.	53.4	.	.
Success Grades	76.4%	76.4%	84.3%	74.3%	100.0%

*Cumulative # of degrees awarded 6 years after admission for degree-seeking students attending full-time.

Unit Profile Data Set
University of Alaska Anchorage
Kodiak College (Page 18 of 20)

Personnel: Fall 2007

Number of Regular Staff	19							
Number of Temporary Staff	12							
		<i>Terminal Degree %</i>	<i>Years with UA</i>	<i>Workload assigned – FTE for College</i>				
<i>Faculty</i>	<i>Number</i>			Teaching	Research	Service	Admin	Other
Regular (Ten Track & Term - Total)	8	37.50%	3.4	5.4	0	1.7	1	0
Associate Professor	1	.	11.2	0.4	0	0.4	0.2	0
Assistant Professor	7	42.90%	2.3	5	0	1.3	0.8	0
Adjunct Faculty	26	.	5.9
Staff % Minority	16.10%							
Faculty % Minority	8.80%							

Research: AY 2007/08

<i>Expenditures x 1000</i>	
Restricted Expenditures	103.8
Research Expenditures	-

Finance: AY 2007/08

<i>Expenditures (in thousands)</i>	
Personal Services	2269.4
Travel	69.6
Contractual Services	558.5
Commodities	173.1
Equipment	48.3
Lands/Buildings	433.8
Student Aid	28.4
Miscellaneous	(41.5)
Total Expenditures	3539.6
Instructional Expenditures per FTES	3.3

<i>Revenue (in thousands)</i>	
General Funds	2656.4
Tuition/Fees	554.8
Intra-Agency Receipts	-
State RSAs	78.7
UA Receipts	81.5
Interst Income	-
Indirect Cost Recovery	10.7
CIP Receipts	-
Federal Receipts	23.3
Total Revenue	3405.4

Unit Profile Data Set
University of Alaska Anchorage
Matanuska-Susitna College (Page 19 of 20)

Students: Fall 2007 (to be consistent with AY 07-08)

	Total	Lower (050-299)	Upper (300-499)	Post-BA (500-599)	Grad (600-699)	
Seat Count	8217	7944	273	0	0	
	Total	OEC & Certificate	Associate	Baccalaureate	Grad (MA, Post- Bac)	Non-Degree Seeking
Unduplicated Headcount	1080	26	533	0	0	521
Student Diversity	13.1%					
FT Students	307					
PT Students	773					
Student Age Profile						
17 & Under	174					
18	93					
19	151					
20 - 24	396					
25 - 29	199					
30 - 39	247					
40 - 49	160					
50 - 59	78					
60 & over	37					
Unspecified	0					

Curriculum: AY 2007/08 (the last full year data available prior to November 2009)

	Total	OEC & Certificate	Associate	Baccalaureate	Grad (MA, Post- Bac)	Non-Degree Seeking
Number of Programs (calc)	21	11	10	-	-	-
	Total	Developmental (050-099)	Lower (100-299)	Upper (300-499)	Post-BA (500-599)	Grad (600-699)
Number of Course Sections	672	32	614	26	0	0
SCH w/Auditors	21154	1670	18663	821	0	0
Student/Faculty Ratio (Fall)	13.4					
Average Filled Seats per Class	13.1					
Average Empty Seats per Class	9.3					

Degree/Certificate: AY 2007/08

	Total	OEC & Certificate	Associate	Baccalaureate	Grad (MA, Post- Bac)
Number of Awards (06-07)	83	7	76	.	.
High Demand Job Area Awards	43	4	39	.	.
Graduation Rate*	9.60%	.	9.60%	.	.
Persistence (1st time, FT)	60.40%	100.00%	59.10%	.	.
Average Terms to Award	.	10.4	9	.	.
Average Credits to First Award	.	62.6	77.2	.	.
Success Grades	76.3%	75.9%	87.9%	0.0%	0.0%

*Cumulative # of degrees awarded 6 years after admission for degree-seeking students attending full-time.

Unit Profile Data Set
University of Alaska Anchorage
Matanuska-Susitna College (Page 20 of 20)

Personnel: Fall 2007

Number of Regular Staff	36							
Number of Temporary Staff	13							
		<i>Terminal Degree %</i>	<i>Years with UA</i>	<i>Workload assigned – FTE for College</i>				
<i>Faculty</i>	<i>Number</i>			Teaching	Research	Service	Admin	Other
Regular (Ten Track & Term - Total)	22	50.00%	6.2	14.6	0	3.4	2.1	1.9
Professor	1	100.00%	19.2	0.9	0	0.1	0	0
Associate Professor	5	80.00%	7.6	3	0	0.8	0.6	0.6
Assistant Professor	14	42.90%	5.1	9.4	0	2.1	1.5	1
Instructor	2	.	3.9	1.3	0	0.3	0	0.4
Tenured Faculty	8	62.50%	9.9	5.5	0	1.3	0.6	0.7
Adjunct Faculty	66	.	4.4
Staff % Minority	10.20%							
Faculty % Minority	2.30%							

Research: AY 2007/08

<i>Expenditures x 1000</i>	
Restricted Expenditures	39.2
Research Expenditures	-

Finance: AY 2007/08

<i>Expenditures (in thousands)</i>	
Personal Services	5482.4
Travel	43.6
Contractual Services	792.7
Commodities	437.7
Equipment	21.2
Lands/Buildings	279.1
Student Aid	31.2
Miscellaneous	(171.7)
Total Expenditures	6916.2
Instructional Expenditures per FTES	2.2

<i>Revenue (in thousands)</i>	
General Funds	4077.6
Tuition/Fees	2540.5
Intra-Agency Receipts	68.7
State RSAs	-
UA Receipts	132.0
Interst Income	-
Indirect Cost Recovery	-
CIP Receipts	-
Federal Receipts	29.4
Total Revenue	6848.2